

Section 10

Sunday Program and Instructions

Bate Bay and Offshore Courses

1 Amended Rules for the Event

- (a) *Bate Bay courses require Safety Category 5 (AS Special Regulations Part 1 Section 2). Additional item: VHF fixed radio as per 3.25.4 or Hand-held VHF radio as per 3.25.6 (Cat 7+ for CSC boats in combined racing).*
- (b) *Offshore races require category 4 for Short Ocean courses.*
- (c) *A Duty Officer or their nominee will be in control of the on-water event and will verify that all boats return to port.*
- (d) *Courses 9 and 10 are amended when sailing under the control of the PHS Duty Officer to the descriptions given in section 10.4 and 10.5.*

2 Summary of Rules for Sailing Events

- (a) *These events will be governed by the ISAF Racing Rules of Sailing (RRS), as amended and the Maritime rules.*
- (b) *All participants must complete the ON LINE entry form complete with audit document and proof of insurance and pay the entry fee when accepted.*
- (c) *All participants must have knowledge of the COLREGS.*
- (d) *All participants must understand the NSW Waterways requirements in case of accidents.*

3 Starting Line (Courses 9, 10 and Alternate 3, 4 and 5)

The start line is a transit line from the Sector light at Glaisher Point (lat. 34° 04.206's, long. 151° 9.394'e) through "Mark E" and extending towards Port Hacking Point.

Start between "Mark E" and Port Hacking Point.

4 Finish Line (Courses 9, 10, Alternate 3, 4 and 5).

Bass and Flinders transit line.

The line will be an extension of the transit line from the Bass & Flinders Obelisk (lat. 34° 4.375's, long. 151° 9.210'e) to the starboard lateral marker pile situated below the Obelisk.

Boats shall finish on the southern side of the Starboard Lateral mark, leaving it to starboard.

5 Start and Finish Line (Alternate Courses 1 and 2)

*Between Starboard channel mark off Hungary Point to a Buoy with red band placed approximately 100m to the SW of the channel mark.
Start in direction to next mark. Finish in direction from last mark.*

6 Start and Finish for Short Ocean races.

Courses that start or finish in Port Hacking will use the Bass and Flinders transit line.

Otherwise, see courses and instructions in "Racing Handbook".

7 Finish Times and Places

Yachts should use "Race Logger" app. which will automatically SMS times. Check that Race Logger shows 'sent' for SMS finish. Otherwise notify finish time by SMS to 0418 253 479 giving (Sail number, Yacht's name and GPS-hh:mm:ss) or (Retirement) in accordance with Section 7.2 and Section 6.6.


8 Radio

The race frequency is VHF73. Boats shall logon to the Duty boat within 30 minutes prior to the "Nominal" start time and remain on watch during the race. Course changes and shortening of the course may be advised on the race frequency.

9 Adjustment to Yacht Times

Each boat's elapsed time will be used to calculate the next race TCF, this is then used to calculate the pursuit starting time for the next race as per the description in Section 9.

10 Course Signals

The course will be signalled by course number or code flag "L" displayed on the red band of "Mark E". Code flag "L"  Come within hailing distance of the duty boat or listen for altered instructions on VHF 73.

11 Recovery of Marks

a) Courses 9, 10 and Alternate course 3, 4 and 5

The 1st boat shall recover "Mark E" and the 2nd boat shall retrieve "Mark C" (if laid), after the last boat has rounded or after the time limit.

b) Alternate Course 1 and 2

By boats placed 1st, 2nd, 3rd, and 4th.

Return buoys to the nominated boat as directed or the designated hooks in the PHS's storage shed if nominated boat is not available.

If unable to pick up mark, arrange another yacht to do so.

12 Summer Program 2023-2024

Race	Start	Date	Course	Nominal Start	Cat	Comment
SH1	Pursuit	10-Sept-23	9/10/Alt	12:30 AEST	5	Combined PHS fleet
SO1	Scratch	24-Sept-23	20/46	11:30 AEST	4	Founder's Bell Buoy/CSC
HBR1	Pursuit	24-Sept-23	9/10/Alt	12:30 AEST	5	Founder's race with CSC
SH2	Pursuit	8-Oct-23	9/10/Alt	13:30 AEDT	5	Combined PHS fleet
SO2	Scratch	22-Oct-23	26/21	12:30 AEDT	4	Marley/Wattamolla
HBR2	Pursuit	22-Oct-23	9/10/Alt	13:30 AEDT	5	Boat Harbour series
SH3	Pursuit	5-Nov-23	9/10/Alt	13:30 AEDT	5	Combined PHS fleet
SH4	Pursuit	19-Nov-23	9/10/Alt	13:30 AEDT	5	Combined PHS fleet
SO3	Scratch	3-Dec-23	23/20	12:30 AEDT	4	Yellow mark or CCBuoy
HBR3	Pursuit	3-Dec-23	9/10/Alt	13:30 AEDT	5	Boat Harbour series
SH5	Pursuit	10-Dec-23	9/10/Alt	13:30 AEDT	5	Finish Spring series

Christmas – New Year's break

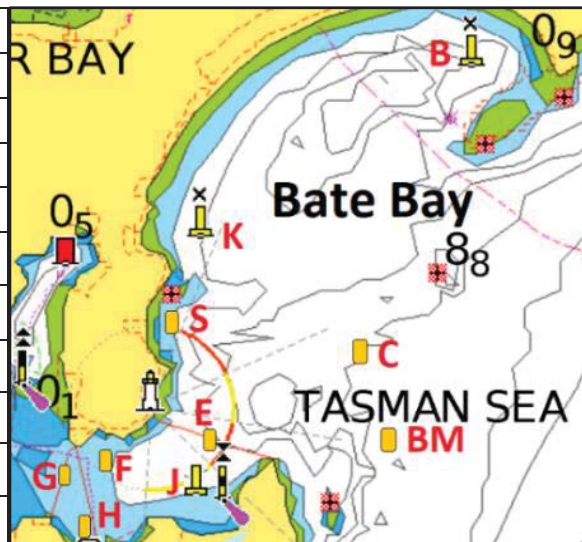
SH6	Pursuit	14-Jan-24	9/10/Alt	13:30 AEDT	5	Start Autumn Series
NPS		20-Jan-23	CSC			Navigators Cup (CSC)
		26-Jan-24				Australia Day
SH7	Pursuit	4-Feb-24	9/10/Alt	13:30 AEDT	5	Combined PHS fleet
SO4	Scratch	17-Feb-24	30	12:00 AEDT	4	Combined with CSC
SO5	Scratch	18-Feb-24	25/27	11:00 AEDT	4	Combined with CSC
HBR4	Pursuit	18-Feb-24	9/10/Alt	13:30AEDT	5	Boat Harbour series
SH8	Pursuit	3-Mar-24	9/10/Alt	13:30 AEDT	5	Combined PHS fleet
SH9	Pursuit	17-Mar-24	9/10/Alt	13:30 AEDT	5	Combined PHS fleet
SO6	Scratch	24-Mar-24	64/21	12:30 AEDT	4	Burning Palms/Wattamolla
HBR5	Pursuit	24-Mar-24	9/10/Alt	13:30 AEDT	5	Boat Harbour series
		29-Mar-24	to	1-April-24		Easter weekend
SH10	Pursuit	7Apr-24	9/10/Alt	12:30 AEST	5	Daylight saving ends
		15-20 Apr				Port Stephens Regatta

13 Winter Program 2024

Race	Day	Date	Course	Nominal Start	Cat	Comment
WTR1	Sunday	5-May-24	9/10/Alt	13:00 AEST	5	
	Sunday	12-May-24				Mother's Day
WTR2	Sunday	19-May-24	9/10/Alt	13:00 AEST	5	
	Saturday	25-May-24				Presentation Night
WTR3	Sunday	2-Jun-24	9/10/Alt	13:00 AEST	5	
	Monday	10-June-24				Queen's Birthday
WTR4	Sunday	16-Jun-24	9/10/Alt	13:00 AEST	5	
WTR5	Sunday	30-Jun-24	9/10/Alt	13:00 AEST	5	
WTR6	Sunday	14-Jul-24	9/10/Alt	13:00 AEST	5	
WTR7	Sunday	28-Jul-24	9/10/Alt	13:00 AEST	5	

14 Marks (Summary of Section 12)

E	Estuary mark: Yellow with red band.
B	Boat Harbour mark (Fixed mark)
C	Sea mark:
K	Kingsway mark (Fixed mark)
H	Horden Beach mark (Bundeena)
F	Fisheries mark (Salmon Haul)
S	Shark Is mark (Off Shelly Park)
G	Start off Hungary Point
J	Jibbon Beach (Fixed mark)
Boats shall pass to seaward of Shark Is.	
Rounding (p) Port (s) Starboard	



15 Sunday Bate Bay Courses (Signalled on red band of Starting Mark)

	9 BATE BAY PASSAGE Summer: Start E, C(p), K(s), B(s), E(p), C(p), B(p) to B&F Fin. 11.25nM Winter: Start E to C(p), K(s), B(s), E(p), C(p) to B&F Fin. (7.95nM)
	10 BATE BAY PASSAGE Summer: Start E, B(p), K(p), C(s), E(s), B(s), C(s) to B&F Fin. 11.25nM Winter: Start E to B(p), K(p), C(s), E(s), C(s) to B&F Finish. (7.95nM)
Code	ALTERNATE COURSES - Code flag "L"
Flag	Alternate 1: (8.3nM unable to race in Bate Bay).
L	All Divisions: Start line at Hungary Point to J(p), S(p), H(s), F(s), J(p), S(p), H(s), F(s), J(p) to finish off Hungary Point.
	Alternate 2: (Category 7 race - 8.3nM in the estuary).
	All Divisions: Start line at Hungary Point to J(p), E(p), H(s), F(s), J(p), E(p), H(s), F(s), J(p), E(p), H(s), F(s), J(p) to finish off Hungary Point.
	Alternate 3: (unable to set C mark)
	Summer: Start E to B(p), K(p), E(p), B(p) to B&F Fin. 10.25nM Winter: Start at E transit line, B(p), K(p), E(p), K(p) to B&F Fin. 7.45nM
	Alternate 4: (K mark missing)
	Summer: Start at E transit line to B(p), E(p), B(p) to B&F Finish. 9.95nM Winter: Start at E to B(p), E(p), C(p), E(p), C(p) to B&F Fin. 8.55nM
	Alternate 5: (B mark missing or very light winds)
	Summer: Start E transit line to C(p), K(p), E(p), C(p), K(p), E(p), C(p), K(p), to finish transit line off Bass & Flinders obelisk. (8.9nM) Winter: Start E to C(p), K(p), E(p), C(p), K(p), E(p), C(p) to finish transit line off Bass & Flinders obelisk. (7.8nM).
	Alternate 6: (Scratch start) See Section 6 – Starting line.
	North: Start at E starting line, B(p), K(p), E(p), K(p) to B&F Fin. 7.45nM South: Start at E starting line, J(p), B(p), K(p), E(p), K(p) to B&F Fin. 8nM