



Racing Handbook 2025-2026



***Royal Motor Yacht Club Port Hacking
228 - 232 Woolooware Rd, Cronulla, NSW 2230***

Welcome to RMYC-Port Hacking Sailing

Located on Port Hacking, with unrestricted views of Gunnamatta Bay, the Royal Motor Yacht Club – Port Hacking is home to a community-minded recreational, entertaining, sailing and cruising club. Formed in 1934, the RMYC Port Hacking has a long history of supporting and encouraging a life enjoyed out on the water.

Ocean yacht racing at Port Hacking was founded by Fred Teiffel in 1963 and was inaugurated in 1964 and known as Port Hacking Ocean Yacht Club (PHOYC) with the first meetings at the Cronulla RSL. Later, the meeting venue was moved to the RMYC-PH and continued as a separate organisation up to 1991. In 1991 some of the PHOYC formed the sailing division of the RMYC-PH and others formed the Cronulla Sailing Club.

Today we remain a division of the RMYC-PH and are known as RMYC - Port Hacking Sailing (PHS). All are welcome to join us on the water.



Cover Photo

Club Champion 2024-2025 –Excentric

Skipped by Michael Wolf

1st Short Haul - Overall

1st Short Ocean series

1st Founders Bell Buoy

2nd Short Haul Spring series

Most Improved performance over the summer Short Haul series (107.6%)

Directory

Description	Page	Section
<u>Office Bearers</u>	4	1
<u>Risk Warnings</u>	5	2
<u>Definitions</u>	6	3
<u>Sailing By Laws</u>	7	4
<u>Sailing Instructions and Race Rules</u>	13	5
<u>Starting and Finishing Instructions</u>	20	6
<u>Wind Warning and Safety Instructions</u>	24	7
<u>NSW Roads and Maritime Services Requirements</u>	26	8
<u>Handicapping - Scratch and Pursuit Starts</u>	28	9
<u>Sunday Program and Instructions</u>	31	10
<u>Skipper's Check List</u>	35	11
<u>Bate Bay Passage and Estuary Courses</u>	36	12
<u>Botany Bay and Harbour Marks</u>	37	13
<u>Offshore Courses</u>	39	14
<u>Wednesday Race Instructions</u>	43	15
<u>Useful Information</u>	48	16
<u>Race Trophies – 2021-2022 Season</u>	49	17
<u>Trophy Winners – 2020-2021 Season</u>	51	18
<u>Sailing Members RMYC Port Hacking</u>	53	19
<u>Yacht Register</u>	57	20
<u>Port Hacking Cruising</u>	59	21
<u>Racing Signals</u>	61	22
<u>Notes</u>	63	23
<u>Emergency Communications and Recovery Point</u>	66	24

Sponsor	Page	Sponsor	Page
<u>Awards Night</u>	12	<u>Ian SHORT Sails</u>	36
<u>Foreshore Painting</u>	27	<u>AusSea Sailing School</u>	47
<u>Cover Girl</u>	30	<u>Infinity Rigging</u>	58
<u>AXS2</u>	30	<u>Macquart Marine</u>	65

Section 1

Office Bearers 2024-2025

Sailing Committee Executive Positions

Position	Name	Mobile
Sailing Captain:	Alistair Rowe	0432 424 629
Vice-Captain: (Racing)	John Barter	0418 253 479
Sailing Secretary:	Glen Burgess	0401 702 654
Treasurer:	Tim Dodds	0418 648 555
Chief Special Regulations Auditor	Bill Dickson	0428 927 071

General Committee Positions

Position	Name	Mobile
Cruising Master:	Peter Corbett	0402 330 330
Social:	Alistair Rowe	0432 424 629
Web Master: CRO/ PCM	John Barter	0418 253 479
Inter Club Liaison:	Jared Macquart	0479 152 235

Equipment Auditors

Qualification	Name	Mobile
EAC/ EAN and PCM	Michael Wolf	0439 139 672
EAC	Rob Milner	0452 232 189
EAC	Glenn Smith	0412 210 405
EAC	Jared Macquart	0479 152 235
PCM/ EAC	Bill Dickson	0428 927 071

Shore Contact

RMYC Port Hacking	Name	Phone
General Manager:	Liam Rogers	9523 9300

Australian Sailing Qualifications

EAC = Equipment Auditor Club, EAN = Equipment Auditor National,
PCM = Protest Committee Member, CRO = Club Race Official

Section 2

Risk Warning

This RISK WARNING is issued jointly by the RMYC Port Hacking, Port Hacking Sailing and the NSW Roads and Maritime Service, pursuant to the Civil Liability Act 2002 to all persons wishing to participate in the sailing activities conducted by RMYC Port Hacking.

Participants are warned that, regardless of the precautions, which might be taken by reasonable and experienced persons, sailing can be a dangerous pursuit, and participants are exposed to significant risk of property damage, physical harm and possibly death.

As an indication, these risks may include, but are not limited to:

- 1. The extremes of weather and sea conditions.*
- 2. The potential that the control of vessels may be lost, resulting in collision with objects and other vessels.*
- 3. The sudden movement of the vessel at any time and the possibility that participants may fall or be thrown overboard, resulting in drowning.*
- 4. The possibility that participants may be injured by equipment on the vessel.*
- 5. The absence of immediate medical care and the likelihood that significant delays may occur before medical care is available.*
- 6. Exposure to the elements for extended periods.*

RMYC-Port Hacking Sailing and the NSW Roads and Maritime Service also warn participants that regardless of their best intentions, they may be unable to render assistance to participants who are in distress. Participants are warned to consider the above risks and all other risks before deciding to participate in any sailing event with Port Hacking Sailing.

Participants are also advised that although RMYC Port Hacking is covered by third party liability insurance; this cover DOES NOT extend to participants. Any participant who considers they have a need for insurance must make their own private arrangements with an insurer. A personal accident insurance policy is available with subscription to membership of Australian Sailing. Paid membership to RMYC-Port Hacking Sailing includes membership of Australian Sailing.

Port Hacking Sailing has a risk management process in accordance with the guidance provided by Australian Sailing. This risk management process has produced a suite of three documents designed to identify and manage on-water risk associated with yachting events conducted by Port Hacking Sailing.

These documents are the "[Operational Management Plan](#)", the "[Yacht Incident Management Plan](#)" and the "[Risk Assessment and Risk Register](#)". These three documents (located on the PHS Web Site) together form the Port Hacking-Sailing (PHS) risk management process, and as such they should be read together, not in isolation.

All skippers should read and make themselves familiar with these documents.

Section 3

Definitions

The Club	<i>Royal Motor Yacht Club of NSW Port Hacking Branch Ltd.</i>
Port Hacking Sailing (PHS)	<i>RMYC-Port Hacking Sailing a sub-club of the Royal Motor Yacht Club of N.S.W. Port Hacking Branch Ltd.</i>
Rules	<i>The 2021-2024 Racing Rules (RRS) of the International Sailing Federation (ISAF) and prescriptions of Australian Sailing (AS), Australian Maritime Safety Authority (AMSA), Marine Orders Part 30, International Regulations for Prevention of Collisions at sea (COLREGS) shall always apply to yachts at sea.</i>
Race Committee	<i>Shall consist of the Vice-Captain, Chief Special Regulations Auditor, and the Duty Skipper.</i>
Duty Skipper	<i>The Duty Skipper shall be a financial member of Port Hacking Sailing. A roster of Duty Skippers is maintained by the Vice-Captain and displayed on the PHS website and Notice Board.</i>
Duty Officer	<i>A member of the sailing committee or their nominee who is responsible for the on-water organisation, conduct and return of boats in the Wednesday and weekend race series.</i>
Race Committee Boat (RCB)	<i>Any vessel designated by the Race Committee for starting, finishing, or assisting in the running of PHS races.</i>
The Starter	<i>Any person or his assistant(s) appointed by the Race Committee to conduct a Port Hacking Sailing race.</i>
Web Site	<i>Available at: https://www.sailing-rmycph.org.au</i>
Boat Owner	<i>Owner or Skipper of a sailing vessel with full voting rights.</i>
Crew Member	<i>Sailing crew member with limited voting rights.</i>
Notice Board	<i>Situated inside the clubhouse on the northern wall.</i>

Section 4

Sailing By-Laws

RMYC - Port Hacking Sailing

Objectives

1. *To develop and encourage the sailing of yachts in a safe and friendly manner, building camaraderie between members and all those interested in sailing.*
2. *To run and administer yacht racing and to encourage cruising.*
3. *To aid with training and advice to all those interested in sailing.*
4. *To be active and self-funding.*
5. *To be affiliated with, and to comply fully with the rules and requirements of Australian Sailing.*

Membership

PHS has three types of membership – the first two are subject to an annual subscription additional to the RMYC-PH membership subscription.

Sailing Boat Members who must also be a financial Boat Owner, Veteran or Life members of RMYC-PH. Sailing Boat Members shall have voting rights at any Annual General Meeting (AGM), Special General Meeting or Skippers Meeting of PHS. They have full access to the marina.

Sailing Crew Members who must also be an Ordinary, Associate or Crew Member of RMYC-PH. Sailing Crew Members shall have voting rights at any Annual General Meeting (AGM), Special General Meeting excluding Skippers Meeting of PHS. They have limited access to the marina.

SailPass Member a temporary PHS membership category to comply with sailing rules and part of the revSPORT system.

Administration

1. Generally:

Being a sub-club of the RMYC-PH, our members are subject to the RMYC-PH Constitution, as well as the various By-Laws of the RMYC-PH (copies of which are available at the RMYC-PH office).

The RMYC-PH conducts monthly Board meetings and the PHS submits minutes from its committee meetings for review.

2. Management:

The management is vested in the Port Hacking Sailing Committee.

The PHS Committee is elected at the AGM by way of a vote by those members eligible to vote. There are five executive committee positions as follows: Captain, Vice-Captain, Secretary, Treasurer and Chief Special Regulations Auditor.

This committee may, from time to time, include additional positions that the committee deems to be to the benefit of Port Hacking Sailing.

3. PHS Committee - Eligibility Requirements:

Throughout this document, membership classes are as defined in the RMYC-PH Constitution.

- 3.1 The positions of Sailing Captain and Sailing Vice-Captain must be filled by **Sailing Boat Members** who are registered Boat Owners with RMYC-PH and should have served at least one year on the PHS committee.*
- 3.2 Other positions on the PHS Committee must be filled by **Sailing Boat Members** or **Sailing Crew Members** with at least 50% being Sailing Boat Members.*
- 3.3 If insufficient nominations are received for the PHS Committee positions, subject to the requirements of 3.1 and 3.2 above, members may be proposed and seconded for the vacant positions at the AGM or any adjournment thereof.*

Members wishing to stand for election to the PHS Committee must be proposed and seconded by financial Port Hacking Sailing members on the appropriate form published with the meeting advice.

The nominees must sign their concurrence to stand for election on a form, which also bears the signature and names of the nominator and seconder.

Nominations must be lodged with the secretary of PHS at least 7 days prior to the date of the AGM. This may be done by sending the completed form by email to: - secretary@sailing-rmycph.org.au

A member of the PHS Committee ceases to be a member of the committee when he or she resigns by notice in writing to the PHS secretary or has been absent from PHS Committee meetings without written reasons for more than six months.

The PHS Committee shall have the power at any time to appoint any eligible PHS member to the committee to fill a casual vacancy until the conclusion of the next Annual General Meeting.

Outgoing PHS Committee members must pass over all materials and information relating to their position to a newly elected committee member.

4. Powers and Duties of the Committee:

- *To set membership subscription rates and prepare financial budgets for submission to RMYC-PH management annually.*
- *To administer and manage all aspects of Port Hacking Sailing's activities including:*
 - *Sailing calendar maintenance and implementation of the PHS's Sailing Rules, including Safety Standards of boats.*
 - *Racing competitions and interclub competition organisation as required from time to time.*
- *Organisation, communication, and management of social functions with the objective of encouraging camaraderie and development of Port Hacking Sailing.*
- *Awards dinner and trophy maintenance.*
- *Communicating with PHS members by newsletter, email, SMS, social media and/or other communication mechanisms as be appropriate from time to time*
- *Management and control of membership and the Sailing Boat Registers.*
- *Financial management of all PHS expenses and the seeking of sponsorship and other fundraising projects.*
- *Recommendations for PHS capital expenditure.*
- *Maintain a close and harmonious relationship with RMYC-PH management, other sub-clubs, Australian Sailing, and other affiliated sailing clubs to ensure that the club has an effective communication channel on all issues.*
- *To provide consultation, leadership, and innovation in planning the PHS's direction.*
- *Any other activities deemed appropriate by the PHS Committee from time to time.*

5. PHS Committee Meetings:

PHS Committee meetings are to be held with a formal agenda for items to be discussed and minutes documented to record decisions made. Additionally, meetings with members will be held when required.

The aim of the PHS committee is to thoroughly review all issues and agree to their decisions by consensus. In the event of a consensus not being reached, a vote is taken with the majority being recorded as the decision. In the event of an equal vote, the chairman of the meeting will have a casting vote to resolve the issue.

A quorum of the PHS Committee shall be 50% of the PHS Committee. If a quorum is not present, the meeting will be adjourned and set for a new meeting date.

Any PHS member wishing to attend a PHS Committee meeting on a casual basis may be invited at the discretion of the committee. All PHS members wishing to attend, or to have tabled any issue for discussion, must do so in writing 7 days prior to the scheduled committee meeting by submitting their documented request to the PHS secretary.

Any PHS member attending on a casual basis shall have no voting rights at the committee meeting to which they attend.

6. Conduct of the Annual General Meeting:

The Annual General Meeting (AGM) of the PHS is to be held at the RMYC-PH as close as possible to the week after the RMYC-PH Annual General Meeting which will usually be on or about the third Wednesday in August. The purpose of the meeting is to elect the PHS Committee for the coming year and to consider resolutions which have been advised in writing to the PHS Secretary 7 days prior to the meeting.

Nominations for PHS committee positions and any other business on which the meeting is required to vote must be lodged with the PHS Secretary in writing with a Proposer and Secunder at least 7 days prior to the AGM date.

Only financial Sailing Members (over 18 years of age) are eligible to propose, second and vote at an Annual General Meeting.

The meeting is conducted under the supervision of the Sailing Captain together with the Secretary who records minutes and a register of attendees.

Only financial PHS members can vote.

7. Financial Management:

Being a sub-club of the RMYC-PH, the PHS is not required to operate separate financial accounts. The PHS does not operate bank accounts or chequebooks or have any responsibility in these areas. The financial management of Port Hacking Sailing is undertaken by the submitting of an annual Budget to RMYC-PH designed to be self-funding.

Any PHS expenditure requires that the submitted tax invoice be approved and signed by any two of the following: Sailing Captain, Vice-Captain or Treasurer and be coded with the general ledger code.

All payments in relation to the PHS are handled by the RMYC-PH Accounts Department.

Should the PHS accumulate surplus funds over the twelve months, the PHS Committee will, considering the needs of the PHS as a priority, make recommendation to the RMYC-PH Board of Directors for the approval and way these funds are to be disbursed or allocated to meet the PHS requirements.

The costs of operating the PHS are significant and each year the committee seeks sponsorship to cover income shortfalls.

Membership fees are determined by the committee to ensure the financial viability of the PHS.

8. Life Membership:

The appointment of Life Membership to the PHS is bestowed upon a Member who has made significant contribution to the success of the PHS “over and above that normally expected” over a substantial period.

The awarding of this honour should be made around the time the outstanding effort has been recognised and achieved, to ensure the contribution is recognised and not lost in the passage of time.

A Nominee must be a financial member of the RMYC-PH and the PHS.

The Nominee must have been a member of the RMYC-PH for a period not less than 7 years.

Not more than one Life Member may be elected annually, and there may not be more than four Life Members of the Port Hacking Sailing (PHS) at any one time.

Nominations for Life Membership must be submitted to the PHS Committee by a nominator and a seconder, both of whom must have been financial members of the RMYC-PH and the PHS for the past five years.

A 75% majority at the PHS AGM must be achieved in this ballot in favour of the resolution for a Nominee to be granted Life Membership, whether by a show of hands or a secret ballot if requested.

Once Life Membership has been granted, the recipient will no longer be required to pay annual PHS membership fees and will have his/her name recorded on the PHS’s Honour Board for Life Members.

The recipient will be required to continue to pay annual subscriptions to RMYC-PH. Should the recipient cease to be a Member of RMYC-PH, he/she will forfeit any rights attached to Life Membership of the PHS.



RMYC-Port Hacking

SAILING



**Awards
Night**

Saturday 24th May 2025

Join your yachting friends for a themed fun night
with great prizes and awards.



Section 5

Sailing Instructions

1 RULES

All races will be governed by the 2025-2028 World Sailing Racing Rules of Sailing (RRS), the prescriptions and special regulations in part 1 for racing boats, the rules of each relevant class and by these Sailing Instructions.

2 ALTERATIONS TO SAILING INSTRUCTIONS

Subject to any contrary provision in the Sailing Instructions contained elsewhere in this Handbook for any specific Race or series of Races, the following instructions and conditions shall apply to all races conducted by PHS subject also to:

- (a) Permanent additions, deletions, alterations, or variations as may be promulgated by PHS by email or SMS and listed on the PHS Sailing website.*
- (b) Any changes or abandonment of a race promulgated on the PHS website, two hours prior to the scheduled race start time, as well as by the Race Committee under the provisions of RRS Part 3 rule 27, which refers to "Other Race Committee Actions before the starting signal".*
- (c) The variation may be advised orally on the water (either by hailing or by VHF radio (CH 73) or by SMS). If there is a Race Committee boat on station, it shall hoist code flag "L" (Lima) before the warning signal. The onus shall be on each boat participating to communicate with the Race Committee Boat or the Duty Officer to determine the nature of the variation(s).*



3 RACE ENTRIES

- (a) A boat is eligible for entry in PHS club races provided that:*
 - i. She has entered online through the PHS website and provided the documentation requested.*
 - ii. Boat is owned or chartered by a financial member of PHS.*
 - iii. The race fee has been paid.*

- iv. The boat provides a current Special Regulations audit form appropriate to the Safety Category of each race, as specified in the PHS's Race Programme.*
- (b) Change of ownership will be regarded as a completely new entry in any point score.*
- (c) Should a fleet fall below three (3) starters over three (3) consecutive races in any series, the series may be abandoned.*
- (d) The Race Committee may refuse the entry of any yacht in any race conducted by the club in accordance with RRS 2025-2028 rule 76.*
- (e) Yachts intending to compete in a race with a replacement skipper shall notify the CHANGE of SKIPPER in writing to the Race Committee forty-eight (48) hours before the scheduled start of that race. The designated replacement skipper shall comply with RRS 46 and associated rules. An adjustment to the yacht's handicap may be made.*
- (f) **Combined races** – Yachts may race in combined races without an entry fee, provided they belong to a registered club and meet the eligibility requirements of their club.*

4 RESPONSIBILITIES

All those taking part in any race do so at their own risk and responsibility as detailed in the Risk Warning.

The club is not responsible for the seaworthiness of a yacht whose entry is accepted or the sufficiency or adequacy of its equipment. Attention is drawn to the RRS, Part 1, Fundamental Rules, 4, Decision to Race, and AS Special Regulations Part 1, Section 1 - Fundamentals and Definitions Rule 1.02 Owners Responsibility.

5 PENALTIES FOR BREAKING RULE

A boat that may have broken a rule of RRS Part 2 while racing may take a one turn penalty at the time of the incident (Amends Rule 44.1). The penalty shall be a 360 degree turn which includes one tack and one gybe. However, if she has caused serious damage or gained a significant advantage in the race or series by her breach she shall retire.

A boat which infringes Rule 42 Propulsion by using her engine or being towed after her preparatory signal but before starting shall take a One Turn Penalty under sail before she starts.

A boat which infringes Rule 42 Propulsion by using her engine to take urgent action to avoid or get clear of an obstruction shall take a One

Turn Penalty before continuing to race (Amends rule 42). In Category 3, 4 & 5 races, full details of occurrences shall be included on a Declaration Form & the Race Committee advised within the time limit for the lodgement of protests.

The Race Committee may adjust the elapsed time of the boat at its discretion or add 2 minutes for each part minute over at the start.

The Race Committee may penalise, without a hearing, a boat that acknowledges she has infringed a rule or sailing instruction in a Declaration lodged in accordance with **Instruction 20**. Amends Rules 63.1 and A5.

6 CREW ELIGIBILITIES

Australian Sailing prescribes that the person in charge shall be a member of a Club affiliated to Australian Sailing and hold a current Australian Sailing Number (ASN), Furthermore, any crew member who sails shall be a member of a Club affiliated to Australian Sailing or have a Sail Pass from Australian Sailing (AS) and have an Australian Sailing Number (ASN) accessed from the PHS website home page. (AS-RRS 2025-2028 rule 46).

7 SCHEDULE of RACES.

As set out in the Racing Program (Section 10).

8 SCORING SYSTEMS.

- (a) A Point Scoring System as set out in RRS 90.3 and Appendix A. A low point score system is used where 1st = 1, 2nd = 2, 3 = 3 and so on.
- (b) Points for Did Not Finish (DNF) = Starters +1, Points for Disqualification (DSQ) = Starters +2.
- (c) Points for all other boats including Did Not Start (DNC) & On Course Side of line (OCS) = Starters +3.
- (d) A boat granted redress shall be awarded points equal to the average of her points in ALL previous races. If there are no races before then she will receive average points of the fleet for that race.
- (e) Any boat that misses a point score race due to participation in a State, National or World Championship for the class, or an approved regatta or competitive race week may request redress. The request shall be submitted in writing to the Sailing Committee before the missed race.

9 DISCARDS

Short Haul - Summer series - Two flexible discards.

Short Haul - Autumn and Spring - One discard in each series.

Short Ocean Series – One discard.

Boat Harbour series – One discard.

Winter Sunday series – One discard.

Two Handed race – One discard.

Wednesday Twilight – 3 discards overall and 0 discards in sub series.

Wednesday Afternoon – 3 discards overall and 0 discards in sub series.

10 HANDICAPS

The handicapping system(s) shall be as promulgated from time to time by PHS and the Section of this handbook entitled Handicapping System (Section 9) shall be deemed to be part of these instructions. In general, the races will be subject to a **Progressive Personal Handicap (PPH)** system adjusted after each race.

Yachts racing as a class may be raced on a “first across the line” basis.

11 MARKS

(a) Unless otherwise prescribed in the sailing instructions, the marks will be yellow buoys or yellow spars or as advised by the Race Committee.

(b) Missing Marks

If marks are not within **0.05** of a nautical mile of the co-ordinates, boats may make a turn after crossing a **radius of 0.05nM** of the given co-ordinates as per the rounding instruction detail in the course. Rounding at a GPS Position in (c) below.

(c) Procedure for Rounding at a GPS Position

Boats are to cross a line defined by a circle of radius of 0.05nM from the nominated GPS position. This amends Rule 28.1.

The GPS shall be set to the WGS84 datum, and the latitude and longitude of the GPS position shall be entered as a waypoint with an approach alarm of 0.05NM.

When a boat crosses the line **0.05nM radius** from the mark co-ordinates, she **shall** make a rounding in the direction specified in the course instruction, but only as permitted by the racing rules or the prevention of collision regulations if other boats are in proximity.

Distance conversion: .05 nM = 304 feet = 93 metres

The Race Committee may review any boat's turning co-ordinates and may rule a boat did not sail the course if the boats track have not crossed the 0.1nM radius of the mark's co-ordinate.

Boat should use eStela tracker to record their GPS turn otherwise the skipper may need to show evidence of the boats turn by any other means available.

12 ADVERTISING

For all Club races, boats shall comply with ISAF Advertising Code, Category C.

13 COURSES

- (a) Descriptions of courses and race programs are contained in this document and are deemed to be part of these sailing instructions and subject to amendment at the discretion of the Race Committee.*
- (b) For courses laid in Bate Bay, the approximate compass bearing from the starting line to the first mark may be displayed by the RCB.*
- (c) Course to be sailed shall be as indicated by flags flown on the Race Committee Boat or as otherwise described in the handbook.*

14 COMMUNICATIONS

- (a) Distress or Calling - VHF Channel 16*
- (b) Race Communication Frequency - VHF Channel 73*
- (c) The Race Committee may broadcast its intentions for the day commencing 90 minutes before each race on VHF channel 73. In addition, the Race Committee may broadcast information regarding the course to be sailed, the starting arrangements and/or other information of interest to competitors, and at the appropriate time the names/sail numbers of boats judged to be OCS.*
- (d) The Race Committee may also transmit course information by SMS.*
- (e) Any failure of, or defect in, such a broadcast will not be grounds for redress. This alters RRS 60.1 and 62.*
- (f) Boats in Category 3, 4 and 5 races shall monitor the radio on the Distress/Calling frequency whilst racing.*

All boats in Category 3 races shall log in with either Marine Rescue South Head (when racing north) or Marine Rescue Port Kembla (south) while in open water. Marine Rescue can be raised on VHF Channel 16, and they will have been supplied with a list of boats.

ach boat should confirm with them the number on board and a mobile phone number for the boat. Marine Rescue will request that the boat reports in as she passes specific points. The boat shall ensure that she logs off before entering Port Hacking or other destination. Logging off can also be done by phone on 02 9337 5033 (Sydney) or 02 4274 4455 (Port Kembla). Should a boat fail to contact the nominated station, she shall call up any other boat in the fleet and report her position.

The use of pre-arranged signals, radio transmissions and the like for the benefit of individual competitors is prohibited, except that a request for the official weather report is permitted and will not infringe Rule 41.

15 RACE TRACKER

Yachts shall use eStela race tracker in all races.

Setup provided for new boats at race entry.

Boats will be recorded as DNF for not using eStela unless a plausible explanation can be provided.

16 CREW WEIGHTS

In races under IRC qualifications, the maximum total weight of crew in kilograms that may sail on board a boat shall not exceed the product of the crew number printed on her IRC certificate multiplied by 90. Amends IRC2015 Rule 22.4.

17 ANCHORS

Anchors mounted on the bow for quick access in the event of an emergency, are permitted.

18 MANUAL POWER

RRS 52 is amended to permit the use of power to control winches.

19 PENNANTS

- (a) *All PHS boats, which have a fixed backstay, shall carry the PHS racing pennant at the stern above the deck when racing and in such a manner that is clearly visible. A boat shall not be penalized for infringing the requirements of this instruction without warning and adequate opportunity to comply.*

Racing Pennant (Available from the front desk)



- (b) *In races in Bate Bay under the control of the CSC, boats shall carry a division flag on the backstay of the same colour as the flag which is the starting signal for that boat's division. A boat not displaying a division flag may not be recorded as a starter or finisher.*

20 BURGEES

Members may fly the PHS burgee both while underway and at anchor (however, not while racing). Sailing vessels may fly the burgee from the main masthead or from a lanyard under the starboard spreader on the mast. Power boats fly the burgee off a short staff on the bow.



21 RACES BETWEEN SUNSET AND SUNRISE

Boats racing or returning from a race between official sunset and official sunrise shall display navigation and stern lights in accordance with the International Regulations for Preventing Collisions at Sea.

These regulations shall replace the relevant rules of Part 2 of the RRS, except on a race starting in the Estuary after sunset when the RRS shall apply until a line from the Glaisher Point navigation light to Hacking Point is crossed.

22 RACE RESULTS

Race results will be posted on the club's web ASAP and may also be on the club notice board.

Section 6

Starting and Finishing Instructions

1 STARTING LINE

- (a) *Unless otherwise prescribed in the sailing instructions, the Starting Line will be between the Race Committee Boat's mast displaying the club burgee and a moored mark at the port end. In addition, a Distance Mark may be laid at or near the Race Committee Boat end of the starting line, in which case boats shall pass between it and the outer mark when starting. A boat shall not pass between the Race Committee Boat and this Distance Mark.*
- (b) **For Category 3, and 4 races** starting in the Estuary, when the Race Committee Boat is on station, the pin-end mark will be a yellow mark with a red band. When the RCB is not on station, the Starting Line will be an extension of the transit line from the Bass and Flinders Obelisk to the starboard lateral marker pile situated below the obelisk. Boats shall start on the southern side of the pile mark, leaving it to port. Even though there is no RCB on station, a yellow/red buoy may be laid in the estuary as the rounding buoy for courses that turn in the estuary.
- (c) **For Category 5 races** courses 3 to 10.
The start line is a transit line from the Sector light at Glaisher Point (lat. 34° 04.206's, long. 151° 9.394'e) through "Mark E" and extending 3 boat lengths towards Port Hacking Point. Start east of "Mark E" and within 3 boat lengths of "E" or between "E" and a yellow mark when placed.
- (d) **For Category 5 races** courses 1 and 2.
Between Starboard channel mark off Hungary Point and a yellow buoy at "mark F" to the SW of the channel mark.

Marks "E" and "F" in category 5 races may be identified with a red band. Boats whose warning signal has not been made shall keep clear of the starting area and of all boats whose warning signal has been made.

(Warning signal deemed to be 5 minutes prior and preparatory signal deemed to be 4 minutes prior to each yacht's start).

2 REPORTING

In Category 3, 4 and 5 races, each boat shall report on VHF73 to the "Race Duty Officer" advising the boat's name, sail number and number of crew at least 5 minutes before the nominal start.

The report may be made by radio using VHF Channel 73. If there is no Race Committee Boat on station, the required report shall be made via VHF Channel 73 to the Duty Officer who may be positioned at the Bass & Flinders Obelisk or be on another boat in the vicinity.

The starter will acknowledge on VHF Channel 73 and notify them of any change in the instructions or an alternate course number. This is deemed to replace the requirements of code flag "L" in IRS Section 5.2.

3 CREW START LIST

(a) **Cat 3 and 4 offshore races outside Bate Bay.**

Each boat shall submit online from the race web page, a list of crew members providing the name of the next of kin and phone number prior to the start, and changes notified to the starter on VHF 73 prior to the warning signal. Boats failing to lodge a NOK will be recorded with a DNC. A copy will be sent to RMYC reception and each sailing committee member.

(b) **Cat 5 and 7 races inside Port Hacking or in Bate Bay.**

Each boat shall submit online from the race web page, a list of crew members prior to the start, and changes notified to the starter on VHF 73 prior to the warning signal. Boats failing to lodge a crew list may be recorded with a DNC.

4 SIGNALS

(a) Signals will be in accordance with ISAF Race Signals as amended by these instructions.

(b) **Starting Signals**

Races will be started using Rule 26 unless otherwise prescribed and divisions will start in the order of the times specified in the Racing Program.

(c) **No Race Committee Boat** (Amends Rules 26 and 29).

When the Race Committee Boat is not on Station, there will be no start or recall signal flags and the signals for starting the race will be deemed to have been made at their scheduled GPS times. The starter may assist by sounding a horn or by an announcement and giving a 10 second countdown on VHF channel 73 at the time of the usual start signals. The starter will also announce Individual and General Recall Signals if required.

(d) **Pursuit Starts** (Amends Rules 26 and 29)

For Pursuit Races in which time is given before the start, each yacht must start on or after its time as read from a GPS source in accordance with Rule 26. **There may be individual recalls.**

(e) **Late Starters**

A boat starting later than ten (10) minutes after her starting signal will be scored "Did Not Start".

(f) **Signals Made Ashore**

Signals made ashore will be displayed on the RMYC Port Hacking's flagpole without sound signals.

5 STARTING RECALLS (Amends RRS Rule29)

(a) After an individual recall, the Race Committee may attempt to notify infringing boats. After signalling a general recall in Category 3 and 4 races, the Race Committee may announce the general recall on radio using VHF Channel 73.

(b) Round the end RRS rule 30.1 shall apply only when Code Flag I is flown with the preparatory signal.

6 FINISH LINE AND FINISH PROCEDURE (Category 3, 4 & 5 Races)

(a) Unless otherwise prescribed in the course description, the finishing line will be between the mast of the Race Committee Boat (RCB) and a yellow mark with red band laid nearby.

(b) If there is no Race Committee Boat (RCB) on station, the finishing line will be an extension of the transit line from the Bass & Flinders Obelisk to the starboard lateral marker pile situated below the Obelisk. Boats shall finish on the southern side of the pile mark, leaving it to starboard.

(c) The starting and finishing times will be recorded through eStela tracking.

(d) Each boat must record their GPS finishing time as local time in a 24-hour format when crossing the line.

~~(e) The race committee may request one or more boats to remain near the finishing line to record the finishing times of latter boats.~~

7 ONESTARTER

Should one boat appear at the start alone, she will be entitled to sail the course and thereafter be declared the winner of that race.

8 MARINE RESCUE

Cat 4 races should log on with marine rescue

Cat 3 races shall log on with marine rescue.

8 RETIREMENTS

Any yacht that starts and then retires shall inform the Starter or Race Committee of her retirement as soon as practicable. This can be notified by SMS to the race number or to the race committee via VHF. Receipt of retirement must be acknowledged by the receiver.

9 TIME LIMITS

- (a) **Category 3 Races** -There will be no time limit.*
- (b) **Category 4 Races** -The time limit will be official sunset. If one boat finishes before the time limit, the time limit will be extended by thirty (30) minutes. Boats failing to finish before the time limit extension will be scored Did Not Finish (DNF).*
- (c) **Category 5 Races** -The time limit is three hours from nominal start.*
- (d) **Category 7 Races** -The time limit is sunset.*

10 PROTESTS

- (a) Protests shall be lodged in writing, in the format of the RRS Protest Form to a member of the Race Committee consisting of: - the Duty Skipper, the Vice Captain and Chief Special Regulations Auditor within the following time limit of the finishing time of the last boat in the last race of the day: Notification can be by SMS.
 - (i) For Category 3 races: twelve (12) hours*
 - (ii) For Category 4, 5 and 7 races: two (2) hours**
- (b) The Vice-Captain or his representative will advise the parties involved in a protest of the place and time of the protest hearing.*
- (c) A protest involving CSC and RMYC boats will be heard in accordance with the protocol of the club to which the protesting boat belongs, and that club will have the role to administer the protest as follows:
 - (i) A member of the Race Committee of the administering club will notify the boat or boats being protested that a protest has been lodged.*
 - (ii) A copy of the protest form must be made available within 24 hours.*
 - (iii) The club administering the protest will in the first instance endeavour to mediate prior to formal protest procedure commencing.*
 - (iv) If mediation is unsuccessful, the club administering the protest will appoint 2 persons to the protest committee and invite the club of the protested boat to nominate a 3rd member.*
 - (v) Wherever possible, one of the persons appointed by the administering club shall be an independent chairman of the protest committee.**

Section 7

Wind Warning and Safety Instructions

1 GALE and STRONG WIND WARNING Category 3 and 4 Races

- (a) *In the event of a Gale Warning by the Bureau of Meteorology www.bom.gov.au in the race area, which is current within two hours before the scheduled start time of a race or for any other reason that the Race Committee may decide, the race shall be postponed to a later date or cancelled, as the Race Committee may decide.*

STRONG WIND Category 3 and 4 Races

- (b) *In the case of a Strong Wind Warning being issued by the Bureau of Meteorology in the race area, which is current within two hours before the scheduled start time of a race, the race committee has the option to:*
- (i) *Postpone the race to a later date (if a re-sail date has been allocated in the program)*
 - (ii) *Alter the course.*
 - (iii) *Cancel the race or start the race as planned.*

RACE COMMITTEE

- (c) *The Race Committee's decision to hold the race shall be based on the following points.*
- (i) *Forecast for specific race area.*
 - (ii) *Current wind and sea conditions.*
 - (iii) *The course to be sailed.*

WIND and WAVE LIMIT Category 5 and 7 Races

- (d) *The race for the day shall be CANCELLED if the forecast for the race area provided by the Bureau of Meteorology on its MetEye site and/or Willy Weather, within two hours before the nominal start, till the race time limit:*
- (i) *Has wind forecast speeds that are greater than 25kts, and/or*
 - (ii) *The forecast Total Wave Height is greater than 2.5m inclusive, or if.*
 - (iii) *The observed wind speed by the Duty Officer is greater than 25kts.*
 - (iv) *Heavy rain/lightning or sea conditions may also cause the cancellation of a race at the discretion of the Duty Officer.*

All decisions made by the Race Committee shall be posted on the official notice board and/or the web site www.sailing-rmycph.org.au at the earliest possible time. The Race Committee will endeavour to be available at the club house prior to the race and are contactable for updates via telephone.

2 DECLARATIONS for Category 3, 4 and 5 races.

- (a) A boat's retirement and/or protest notification should be sent via a SMS message **within 1 hour** of finishing each race.*
- (b) A SMS or voice message sent within the 1-hour deadline will qualify as a valid declaration.*
- (c) eStela tracking will provide the GPS mark's turning track when required and the finish time.*
- (d) Notification of a protest can also be made by SMS within the time requirement. However, full details must be followed up in writing as per protest in section 6.10.*

3 SAFETY REQUIREMENTS

- (a) A yacht shall not be regarded as having entered any races unless holding a current AS Special Regulations Audit Form for her division which has been accepted by the PHS's Chief Special Regulations Equipment Auditor.*
- (b) Each yacht must provide proof of insurance.*
- (c) Yachts will be subject to AS Special Regulations Equipment audit at dates arranged by PHS and on a random basis.*
- (d) All yachts shall comply with the NSW Roads and Maritime Service Safety Regulations.*
- (e) All yachts maintain a continuing listening watch on VHF16 at sea.*
- (f) A requirement in case of Accident – Attention is drawn to the necessity of complying with the NSW Roads and Maritime Service, as set out in section 11 of this Handbook.*
- (g) Except two handed events, Yachts in Category 3, 4 and 5 races intending to fly extras shall have at least 3 crew over the age of 18 years. Yachts competing in Category 3, 4 and 5 races not intending to fly extras shall have at least 2 crew over the age of 18 years.*
- (h) Two Handed Sailing Events must have two crew over 18 years.*
- (i) COLREGS shall take precedence over the Racing Rules of Sailing between sunset and sunrise.*
- (j) Wearing of PFD is always recommended during a two-handed event and mandatory on deck after dark*

Section 8

NSW Roads and Maritime Services

Incident Reporting

1. *If a boating accident occurs in any port or navigable water in NSW, the master of the vessel must:*
 - (a) *Stop the vessel immediately.*
 - (b) *Give any assistance which may be necessary.*
 - (c) *Produce any licence.*
 - (d) *Give details to any person having reasonable grounds for requesting them (e.g., other persons involved in the accident).*
 - (e) *Details must include the master's name and address and any distinguishing number (that is, registration number or permit number) which is required to be displayed on the vessel.*
2. *If requested by a Maritime Officer or Police officer, provide the following details:*
 - (a) *Full identification.*
 - (b) *Time, place, and nature of accident.*
 - (c) *Name and registration number of every vessel involved in the incident.*
 - (d) *Name and address of every person who was concerned with or witnessed the accident.*
 - (e) *Extent of any injury or damage resulting from the accident.*
 - (f) *Produce a boat driver's licence or certificate of competency.*
3. *Where the accident has resulted in the death of, or injury to, a person; or damage more than \$5,000 to a vessel, or any other property, a written report must be forwarded to Maritime within 24 hours setting out the particulars, unless these have already been given to a Maritime officer.*

Vessel Incident Report Forms

Vessel Incident Report forms are available from any **Maritime operations centre**, or download from Maritime's website, the Police, and Marine Rescue NSW.

A copy of the Incident Report should also be forward to the Sailing Captain.

NOTE: Penalties apply for not reporting an accident to Maritime.

Emergency Contacts: Tel 000 or VHF16

The above requirements are found in the Roads and Maritime Services website at this address: <http://www.rms.nsw.gov.au/maritime/safety-rules/incidents-emergencies/incident-reporting.html>

FORESHORE

• PROFESSIONAL PAINTING SERVICES •

A PAINTING AND DECORATING SERVICE
WHERE EVERY STAGE OF THE JOB IS CHECKED AND SIGNED OFF FOR QUALITY.



James Hoy

0412129339

james@foreshorepainting.com.au

www.foreshorepainting.com.au

licence #207111C

DECORATION RENOVATION MAINTENANCE COLOUR CONSULTANCY PROJECT MANAGEMENT

Section 9

Handicapping

Category 3, 4 and 5

Time adjustments will be based on a Time Correction Factor (TCF) performance not on finish place.

All boats will be handicapped on their elapsed time as follows:

1. Base Handicap

- (a) The Progressive Personal Handicap (PPH) will be used from the last series when available. New boats will be allocated an arbitrary TCF to be reviewed after 3 races.*
- (b) The corrected time of each yacht in the race will be calculated by multiplying the elapsed time (finish time less official start time) by its (PPH_{start}) handicap.*
- (c) The place for each race will be on corrected time.*
- (d) The points will be on a modified low point system where 1st = 1, 2nd = 2, 3rd = 3 and so on.*

2. Declarations

The skipper shall declare to the Handicapper at least 48 hours before the race starts any alterations to the sails, or the number of sails carried by the yacht, or to the yacht and any of its equipment including professional crew which could alter its performance.

Penalties may apply, at the discretion of the Handicapper, to any yacht that uses professional crew to break the spirit of the Personal Handicap System. To avoid this, skippers may notify the race committee, of the temporary participation of sail makers or another professional crew.

3. Alterations to Handicaps

All handicaps will be reviewed before the commencement of the season's point score.

The Handicapper may alter a yacht's handicap at his discretion:

- (a) If it is considered necessary after declaration above.*
- (b) If the present handicap appears incorrect.*
- (c) If the yacht's owner submits a written request for a review for specific reasons.*
- (d) If a yacht fails to start, or retires, or is disqualified.*
- (e) If there has been an anomaly in setting the handicap.*

4. Adjustments to the Personal Progressive Handicaps (PPH)

A Yacht's Progressive Personal Handicap (PPH) will be calculated after each race to the following system:

- (a) The corrected time of each yacht in the race will be calculated by multiplying the elapsed time by its handicap.*
- (b) The corrected times are sorted from the lowest to highest for the race result.*
- (c) The **median corrected time** is established using the ECHO method. This method ensures that the average adjustment is zero and so avoids any inflation/deflation over time. i.e., The addition of the old handicaps equals the addition of the new handicaps.*
- (d) After each race, a personal Time Correction Factor (TCF) is calculated by dividing the **median corrected time** by the elapsed time of each competing yacht.*
- (e) The last PPH handicap is averaged with the calculated TCF for the next Progressive Personal handicap.*
- (f) For Series of more than 5 races; 65% of the last handicap plus 35% of the calculated TCF is the next handicap.*
- (g) For series of 5 or less races; 50% of the last handicap plus 50% of the last TCF is the next handicap.*
- (h) The next handicap will be limited to a 5% change from the last handicap.*
- (i) Boats that did not Race, did not finish or were disqualified (DSQ); will not have their PPH handicap adjusted.*

5. Start Time Calculation for Pursuit Starts

The new (PPH_{new}) handicap is converted to a pursuit start time where the slowest boat starts at the scheduled start time and a race time is predicted for the slowest boat.

6. Ties Broken in the following Order

- (a) A8.1 Most Best Scores Excluding Discards.*
- (b) A8.2 Best Score in Latest Race Including Discards.*
- (c) Ties Remain.*

7. Calculation of average points

*When redress is granted for average points, they will be the average of all previous races including discards in the relevant series.
If granted in race 1 the average points for that race will be used.*

Covergirl

MARINE TRIMMING

Custom Made Boat Covers

You break it - We'll remake it

Covergirl Marine Trimming specialize in replacing or repairing existing marine covers for yachts and power boats of all sizes. Custom projects can be made from square one, to your specific requirements using UV resistant and waterproof fabrics and thread.



For all your marine fabricating needs, contact Allison: **0468 421 501** for an obligation free quote. <https://covergirlmarinetrimming.com.au/>
Boat sewing by someone who understands how much you love your boat!



DIGITAL MARKETING FOR
LOCAL BUSINESS

Websites
Facebook & Google Ads
SEO
Email Marketing

AXS2.COM.AU 0468 495848

A Few Of Our Awesome Clients



Sunday Program and Instructions

Bate Bay and Offshore Courses

1 Amended Rules for the Event

- (a) *Bate Bay courses require Safety Category 5 (AS Special Regulations Part 1 Section 2). Additional item: VHF fixed radio as per 3.25.4 or Hand-held VHF radio as per 3.25.6 (Cat 7+ for CSC boats in combined racing).*
- (b) *Offshore races require category 4 for Short Ocean courses.*
- (c) *A Duty Officer or their nominee will be in control of the on-water event and will verify that all boats return to port.*

2 Summary of Rules for Sailing Events

- (a) *These events will be governed by the ISAF Racing Rules of Sailing (RRS), as amended and the Maritime rules.*
- (b) *All participants must complete the ON LINE entry form complete with audit document and proof of insurance and pay the entry fee when accepted.*
- (c) *All participants must have knowledge of the COLREGS.*
- (d) *All participants must understand the NSW Waterways requirements in case of accidents.*

3 Starting Line (Courses 3, 4, 5, 6, 7, 8, 9, and 10)

The start line is a transit line from the Sector light at Glaisher Point (lat. 34° 04.206's, long. 151° 9.394'e) through "Mark E". Start east of "Mark E" and within 3 boat lengths of "E" or between "E" and a yellow mark when placed.

4 Finish Line (Courses 3, 4, 5, 6, 7, 8, 9 and 10).

Bass and Flinders transit line.

The line will be an extension of the transit line from the Bass & Flinders Obelisk (lat. 34° 4.375's, long. 151° 9.210'e) to the starboard lateral marker pile situated below the Obelisk.

Boats shall finish on the southern side of the Starboard Lateral mark, leaving it to starboard.

5 Start and Finish Line (Courses 1 and 2)

Between Starboard channel mark off Hungary Point and a yellow buoy at "mark F" to the SW of the channel mark.

Start in direction to next mark. Finish in direction from last mark.

6 Start and Finish Line for Short Ocean races.

Courses that start or finish in Port Hacking will use the Bass and Flinders transit line.

Otherwise, see courses and instructions in "Racing Handbook".

7 Finish Times and Places

Yachts shall use eStela tracking app. To record starting time, track and finish time.

Otherwise, yachts will be recorded as DNF without a valid explanation.

Yachts shall record their finishing time in case it is called for.

8 Radio

The race frequency is VHF73. Boats shall logon to the Duty boat within 30 minutes prior to the "Nominal" warning signal and remain on watch during the race.


Course changes and shortening of the course shall be advised on the race frequency.

9 Adjustment to Yacht Times

Each boat's elapsed time will be used to calculate the next race TCF, this is then used to calculate the pursuit starting time for the next race as per the description in Section 9.

10 Course Signals

The course will be advised by SMS or at time on logging in.

On start mark code flag "L"  means come within hailing distance of the duty boat or listen for altered instructions on VHF 73.

11 Recovery of Marks

a) Courses 3 to 10.

The 1st boat shall recover "Mark C" if laid, the 2nd boat shall retrieve "Mark E", the 3rd boat shall recover the yellow starting line mark if laid. Recovery after the last boat has rounded or after the time limit.

b) Course 1 and 2

By boats placed 1st, 2nd, 3rd, and 4th.

Return buoys to the nominated boat as directed or the designated hooks in the PHS's storage shed if nominated boat is not available.

If unable to pick up mark, arrange another yacht to do so.

12 Summer Program 2025-2026

Race	Start	Date	Course	Start	Cat	Comment
SH1	Pursuit	14-Sept-25	1-10	12:30 AEST	5	All PHS Sunday boats
SO1	Scratch	28-Sept-25	20/46	11:30 AEST	4	Founder's Bell Buoy
HBR1	Pursuit	22-Sept-24	1-10	12:30 AEST	5	Founder's race
SH2	Pursuit	12-Oct-25	1-10	13:30 AEDT	5	6 th Oct Daylight saving
SO2	Scratch	19-Oct-25	26/21	12:30 AEDT	4	Marley/Wattamolla
HBR2	Pursuit	19-Oct-25	1-10	13:30 AEDT	5	Boat Harbour series
NPS		1/2-Nov25		10:00 AEDT	4	Shell Cove with CSC
SH3	Pursuit	9-Nov-25	1-10	13:30 AEDT	5	All PHS Sunday boats
SH4	Pursuit	16-Nov-25	1-10	13:30 AEDT	5	All PHS Sunday boats
SO3	Scratch	30-Nov-25	23/20	12:30 AEDT	4	Yellow mark or CCBuoy
HBR3	Pursuit	30-Nov-25	1-10	13:30 AEDT	5	Boat Harbour series
SH5	Pursuit	14-Dec-25	1-10	13:30 AEDT	5	Finish Spring series

Christmas – New Year's break

SH6	Pursuit	11-Jan-26	1-10	13:30 AEDT	5	Start Autumn Series
NPS		17-Jan-26	CSC			Navigators Cup (CSC)
		26-Jan-26				Australia day
SH7	Pursuit	1-Feb-26	1-10	13:30 AEDT	5	All PHS Sunday boats
SO4	Scratch	7-Feb-26	30/53	12:00 AEDT	4	Combined with CSC
SO5	Scratch	8-Feb-26	25/27	12:00 AEDT	4	Combined with CSC
HBR4	Pursuit	8-Feb-26	1-10	13:30AEDT	5	Boat Harbour series
SH8	Pursuit	1-Mar-26	1-10	13:30 AEDT	5	All PHS Sunday boats
SH9	Pursuit	15-Mar-26	1-10	13:30 AEDT	5	All PHS Sunday boats
SO6	Scratch	29-Mar-26	64/21	12:30 AEDT	4	Burning Palms/Wattamolla
HBR5	Pursuit	29-Mar-26	1-10	13:30 AEDT	5	Boat Harbour series
		3/4/5 April				Easter 2026
SH10	Pursuit	12-Apr-26	1-10	12:30 AEST	5	6 th Apr 2026 ESTime
NPS		22-28 April	2026			Port Stephens Regatta

13 Winter Program 2026

Race	Day	Date	Course	Nominal Start	Cat	Comment
WTR1	Sunday	3-May-26	1-10	13:00 AEST	5	
	Sunday	10-May-26				Mother's Day
WTR2	Sunday	17-May-26	1-10	13:00 AEST	5	
WTR3	Sunday	31-May-26	1-10	13:00 AEST	5	
	Monday	8-June-26				King's Birthday
WTR4	Sunday	14-Jun-26	1-10	13:00 AEST	5	
	Saturday	20-Jun-26				Presentation night
WTR5	Sunday	28-Jun-26	1-10	13:00 AEST	5	
WTR6	Sunday	12-Jul-26	1-10	13:00 AEST	5	

14 Two Handed series with CSC

Race	Day	Date	Course	Start	Cat	Comment
TWH1	Saturday	18-Oct-25	CSC course 29	12:00 AEDT	5	With CSC starter
TWH2	Saturday	13-Dec-25	CSC course 41	12:00 AEDT	5	With CSC starter
TWH3	Saturday	21-Feb-26	CSC course 71	12:00 AEDT	5	With CSC starter

15 PHS - BATE BAY COURSES

	COURSE 1: (unable to race in Bate Bay).
P	Start line at Hungary Point to PH(p), S(p), H(s), F(s), PH(p), S(p),
H	H(s), F(s), PH(p) to finish line off Hungary Point – 8.2nM.
S	COURSE: 2: (Category 7 race in the estuary).
	Start line at Hungary Point to PH(s), H(s), F(s), PH(s), H(s), F(s),
C	PH(s), H(s), PH(s), to finish line off Hungary Point - 8.0nM.
o	COURSE 3: (unable to set C mark)
u	Long: Start line E to K(s), B(s), E(s), K(s), B(s) to *B&F Finish - 10.25
r	Short: Start at E to K(s), B(s), E(s), K(p) to *B&F finish - 7.45nM.
s	COURSE 4: (K mark missing)
e	Long: Start at E to C(p), B(p), E(p), C(p), B(p) to *B&F Finish -10.3nM
s	Short: Start at E to C(p), B(p), E(p), C(s), to *B&F finish - 7nM.
1	COURSE 5: (Port Triangles or B mark missing)
to	Long: Start E to C(p), K(p), E(p), C(p), K(p), E(p), C(p), K(p), E(p),
10	C(s) *B&F finish. (Three laps + sausage – 10.8nM).
	Short: Start E to C(p), K(p), E(p), C(p), K(p), E(p), C(s), *B&F finish.
	(Two laps + sausage – 7.9nM).
	COURSE 6: (Starboard triangles or B mark missing)
	Long: Start E to K(s), C(s), E(s), K(s), C(s), E(s), K(s), C(s), E(s), then
	K(p) to *B&F finish. (Three laps + sausage – 11.3nM)
	Short: Start E transit line to K(s), C(s), E(s), K(s), C(s), E(s) then K(p)
	to *B&F finish. (Two laps + sausage – 8.4nM)
	COURSE 7: Scratch start for Northerly winds See Section 6.1.
	From E starting line, B(p), K(p), E(p), K(p) to *B&F Fin. - 7.45nM.
	COURSE 8: Scratch start for Southerly winds. See Section 6.1.
	From E starting line, J(p), B(p), K(p), E(p), K(p) to *B&F Fin. - 8nM.
	COURSE 9: BATE BAY PASSAGE
	Long: Start E, C(p), K(s), B(s), E(p), C(p), B(p) to *B&F Finish. 11.25
	Short: Start E to C(p), K(s), B(s), E(p), C(s) to *B&F Finish. - 7.95nM.
	COURSE 10: BATE BAY PASSAGE
	Long: Start E, B(p), K(p), C(s), E(s), B(s), C(s) to *B&F Finish - 11.25
	Short: Start E to B(p), K(p), C(s), E(s), C(s) to *B&F Finish - 7.95nM.



M
a
r
k
“E”

Marks “E” and “F” may be identified with a red band.

***B&F finish:** transit line off Bass & Flinders obelisk.

See marks latitude and longitude in section 11.

Section 11

Skipper's Check List.

From risk management document

Skippers are responsible for the safety of the vessel, people on board and aiding vessels in difficulty. If responding, they must not place themselves, crew or vessel in danger.

The following is a check list to be used in conjunction with the risk management system.

1 Entering and preparing to sail in a race series.

- Does the race require crew with a Marine Radio Operators Proficiency Certificate?*
- Brief your crew on emergency response in the case of an incident.*
- Provide training in the location of safety equipment and how it is to be used.*

2 Regularly during the race season.

- Ensure that your yacht is adequately prepared as per your audit form.*
- Update as necessary your yachts Incident Management Plan.*
- Brief your crew with your yachts Man-Over-Board (MOB) recovery procedures.*
- Practice safety routines at reasonable intervals including MOB.*
- Ensure the crew is drilled in the use of the heavy weather equipment.*

3 Before each race.

- All Safety Equipment is on board, in date and in good working order.*
- Have appropriately experienced crew on board to cope with the conditions.*
- Submit Next of Kin form (NOK) for cat 3 and 4 races, advise starter of changes.*
- Refer to the latest weather forecasts for the race area paying attention to forecast hazardous weather.*
- Ensure enough fuel on board to return from any point in adverse conditions.*
- For category 3, 4 and 5 races, log on using VHF 73 to the Starter and give POB.*
- Check position of preferred evacuation locations for injured persons.*
- Check if there are any specific safety requirements for each race.*

4 During each race.

- The skipper should monitor crew for continued well-being while on board.*
- Ensure safety equipment is deployed as appropriate to the conditions.*
- Wearing of PFD is always recommended during two handed events.*
- Monitor VHF 16 and be prepared to assist other vessels in need of assistance.*
- Alternative communicating includes mobile phones or VHF channel 73 relay via another vessel.*
- Emergency communication when in line of sight of other vessels, aircraft or the shore may include flares, V-sheet or other visual means.*
- Should an incident occur, and you need outside assistance be prepared to notify the other competitors and Marine Rescue as appropriate.*

5 After each race.

- Log off by sending the finishing time by SMS to the race contact number.*
- In the case of a DNF, SMS the reason and location of the yacht.*
- SMS not required for yachts using Race Logger which shows "sent" at finish.*

Section 12

Bate Bay and Estuary Courses

Category 5 races



Figure 1 – Bate Bay

Codes for Marks

E	Estuary - yellow buoy/red band (lat. 34° 04.330'S, long. 151° 09.670'E)
B	Boat Harbour - yellow pillar buoy (lat. 34° 02.4'S; long. 151° 11.4'E)
C	Sea mark - yellow buoy (lat. 34° 04.00'S long. 151° 10.600'E)
K	Kingsway mark - shark buoy (lat. 34° 04.767'S; long. 151° 09.827'E)
BM	Bombora mark - yellow buoy (Lat 34° 04.30' S; Long 151° 10.9' E)
WR	Wave Rider - yellow spherical buoy (lat. 34° 02.435'S, long. 151° 15.182'E) moored approximately 1.5NM east of Cape Bailey.
F	Fisheries mark - yellow buoy (lat. 34° 04.500'S, long. 151° 08.862'E)
H	Horden's mark - yellow buoy (lat. 34° 04.875'S, long. 151° 08.920'E)
PH	Port Hacking mark – yellow buoy (lat. 34° 04.33S, long 151° 9.88'E)
J	Jibbon mark - yellow pillar buoy (lat. 34° 04.767'S, long. 151° 09.694'E)
S	Shelly mark - yellow buoy (34° 03.790'S, long. 151° 09.680'E)
Rounding (p) Port Rounding/Passing (s) Starboard Rounding/Passing.	
Note: Boats shall always pass to seaward of Shark Island.	
Co-ordinates: Are approximate and may vary from those given above.	

Section 13

Botany Bay and Harbour Marks

Category 3 and 4

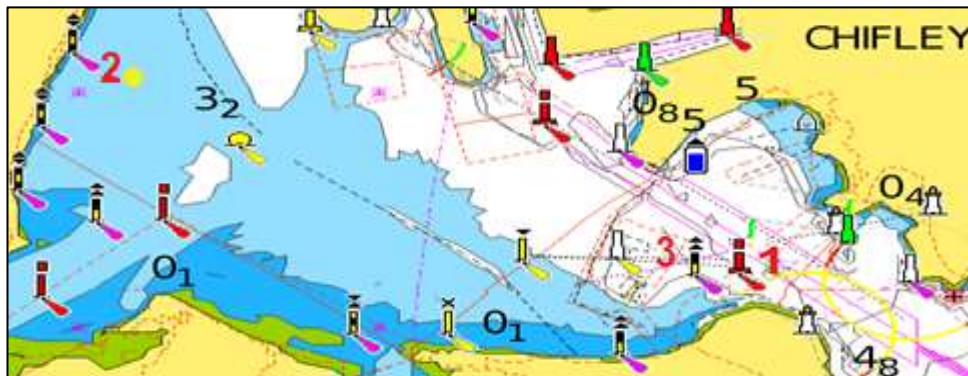


Figure 2 - Botany Bay

Botany Bay Turning Marks

Captain Cook buoy (1): A red pillar buoy (lat.33°59.9's; long. 151°13.2'e).

Botany Bay Waverider (2): Yellow Buoy (lat 33° 59.190's long 151° 09.240'e)

Note: Yachts must keep clear of shipping and the channel into Port Botany and sail north of the Kurnell cardinal mark (3).

Welcome to IAN SHORT SAILS

We design and manufacture high performance racing sails and durable cruising sails at competitive prices. We use the very latest software and sail technology. Our sails are used by world & national champions, high performance racers, club sailors and cruising yachts.

Results on the water testify to the excellence of our sails.

ianshort600@gmail.com Mob: 0409 224 118 www.ianshortsails.com.au



Customers First

We give individual attention to each and every client - regardless of size or class of boat.



Hobart Victory

Ariel places First Overall on ORCi, Third Overall on IRC in 2014 Rolex Sydney Hobart Race



Results

Results prove that Ian Short Sails have consistently outperformed competitors in blue ribbon events

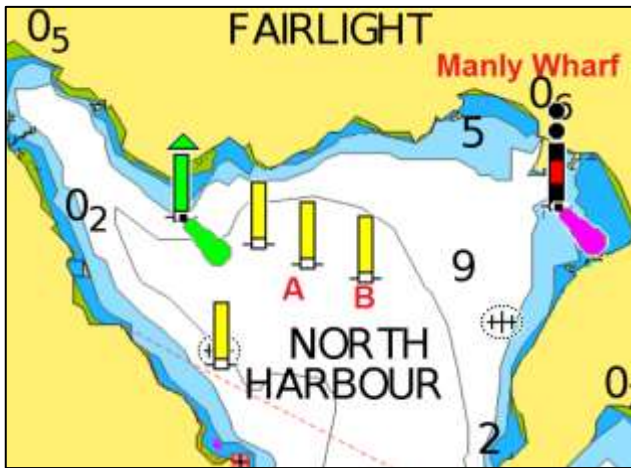


Figure 3 – Port Jackson (4)

Port Jackson Turning Marks

MW-Manly West Yellow spar buoys (A)
 AS #10 in Manly Cove lat. 33°48.18'S; long. 151°16.63'E

ME-Manly East Yellow spar buoys (B)
 AS #11 mark in Manly Cove lat. 33°48.20'S;
 long. 151°16.73'E

Clarke Island Starboard Marker (C) lat. 33°
 51.814'S long. 151° 14.488'E

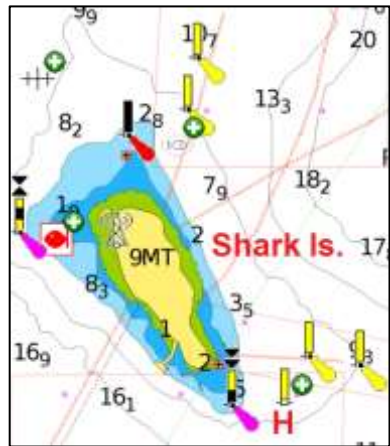
Public Jetty Flag Mast (Darling point) (D) lat.
 33° 52.000'S long. 151° 14.375'E
 Bearing 206°T form Clarke Island Starboard mark.

EC-Starboard eastern channel mark (E)
 lat. 33°50.50'S; long. 151°16.30'E (Wedding Cake)

Obelisk - On Laing's Point (F) east of the Wedding
 Cake LB-Lady Bay Yellow spar buoys.

AS mark #14 (G) lat.33°50.08'S; long. 151°16.61'

Shark Is Mark. (H) Yellow spar buoy at
 lat. 33°51.63'S long. 151°15.54'E

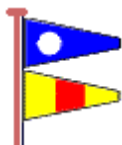


Section 14

Offshore Courses

Category 3 and 4 Races

20 **CAPTAIN COOK BUOY to Waverider – 17NM**



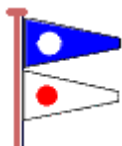
From the starting line, proceed to Botany Bay and turn to starboard after crossing the 'Captain Cook Transit Line', then to the Waverider buoy (stbd), thence to the finishing line in Port Hacking.

Transit Line: A line from the Flag Mast with yard arm at lat 34° 00.155'S long 151° 13.281'E through the Captain Cook Buoy.

Boats must pass north of the Captain Cook Buoy.

Record 1 hrs 45 min 49 sec, "Color Tile" Warren and Kristy Buchan, January 2010

21 **WAVERIDER, WATTAMOLLA AND RETURN – 18NM**



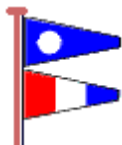
From the starting line, proceed to the Waverider leaving the mark to starboard, thence to a mark* (stbd), located approximately one and a half nautical miles East of Wattamolla Beach (lat. 34° 08.6'S; long. 151° 09.0'E), thence to the finishing line.

*(This mark may be substituted with the GPS rounding procedure.

Note: all boats shall pass to seaward of the Jibbon Bombora (lat. 34° 04.9'S; long. 151° 10.5'E).

Record — 2 hrs 20min 25 sec, "Color Tile" Warren and Kristy Buchan, February 2014 (New course)

23 **BOTANY BAY YELLOW WR MARK Waverider Estuary – 22NM**



From the starting line, proceed to Botany Bay to the Lady Robinson Yellow Cone buoy at approximately lat 33° 59.190's long 151° 09.240'e (stbd), thence to the Waverider buoy (stbd), to Port Hacking to the finishing line.

Note: Keep clear of the Port Botany shipping channel and past to the north of the Kurnell cardinal mark.

Yellow mark changed to Yellow Cone in line with Ramsgate Road.

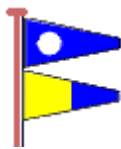
Record – 2h 29mins 06 secs, "Color Tile" Warren and Kristy Buchan, September 2013.

24 **PORT HACKING TO WATSONS BAY – 18nM**



From the starting line, proceed to Port Jackson to the finishing line, between the Eastern Channel Pile Light and the Obelisk on the foreshore of Laings Point, Watsons Bay, crossing from North to South.
Record: 2h.6m. Nov. '82 - Bob Drummond - "If Only" - S111

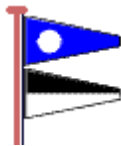
25 WATSONS BAY TO PORT HACKING – 19NM



From the starting line, being a line between the Eastern Channel Pile Light in Port Jackson and the Obelisk on the foreshore of Laings Point, Watsons Bay, proceed to South Head, thence to Port Hacking to the finishing line.

Record: 2h.14'30" Feb. '93 - Phil Bates - "Passing Wind" - Adams 10

26 WAVERIDER, MARLEY, BOAT HARBOUR, and RETURN – 20NM



From the starting line, proceed to the Waverider buoy (stbd), thence to a mark* (stbd), located approximately one and a half nautical miles East of Marley Beach (lat. 34° 07.5'S; long. 151° 10.1'E), thence to the Boat Harbour Mark (port), thence to the finishing line.

*(This mark may be substituted with the GPS rounding procedure.

Note: all boats shall pass to seaward of the Jibbon Bombora (lat. 34° 04.9'S; long. 151° 10.5'E).

Record – 2:22:34 "Color Tile" Warren and Kristy Buchan, Nov 2013

27 CLARKE ISLAND TO PORT HACKING – 20NM



From the starting line in Port Jackson, being a transit bearing 206 true from the Clarke Island Starboard mark (lat. 33° 51.814'S; long. 151° 14.488'E) to the Flag mast on the Darling Point public jetty, distance 0.2NM, (lat. 33° 52.0'S; long. 151° 14.4'E) proceed to South Head, thence to Port Hacking to the finishing line.

Record: 2h.08'05" Nov. '09 - W & K Buchan - "ColorTile"- Sayer 44

29 WEDDING CAKE ISLAND to Waverider – 24NM

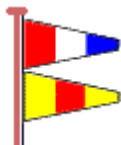


*From the starting line, proceed to *Wedding Cake Island (lat. 33° 55.7'S long. 151° 15.8'E) rounding the island to starboard, thence via the Waverider buoy (stbd) to Port Hacking to the finishing line.*

**The rounding at Wedding Cake Island may be substituted with the GPS rounding at lat. 33° 55.500'S long. 151° 16.250'E. (Section 5.11)*

Record: 3 hrs 45 mins 29 sec October 2008 - Chris Bran "Brannie Three" (via Waverider).

30 PORT HACKING TO CLARKE IS. VIA MANLY COVE – 26NM



From the starting line, proceed to Manly Cove in Port Jackson to the Manly West YNSW Mark (stbd), to the Manly East YNSW Mark (stbd), to Shark Island leaving the YNSW Mark and the adjacent South and West Cardinal Marks to starboard, thence to the Clarke Island finishing line between the Clarke Island Starboard mark (Lat. 33° 51.814'S; long 151° 14.488'E) to the Flag mast on the Darling Point public jetty (Bearing 206°T), Distance 0.2NM, (lat. 33° 52.0'S long. 151° '14.40'E).

Record: 3h.12'10" Feb. '27 -Warren & Kristy Buchan - "ColorTile"

39 BATE BAY Windward / Leeward - 12NM

Separate Start and Finish Lines will be laid to leeward in Bate Bay. The start line will be between the signal mast of the Race Committee Boat and a mark laid to port and the finish line will be between the signal mast and a mark laid to starboard.



Up to three differently coloured top marks may be laid approximately 1.5NM to windward of the RCB to allow for varying wind directions and the RCB will indicate on a white board before the start which one of the top marks will be Mark 1 for that race and give the approximate bearing to the mark. Each boat should check the top mark with the RCB before each race. The bottom Mark 2 will be laid approximately 100m to windward of the RCB.

All divisions: Start to 1(p), 2(p), 1(p), to Finish.

46 PORT HACKING TO WAVERIDER and RETURN - 10NM

From the starting line, proceed to the Waverider yellow spherical buoy (lat. 34° 02.435'S, long. 151° 15.182'E) moored approximately 1.0NM east of Cape Bailey rounding the mark to port, thence to Port Hacking to the finishing line.

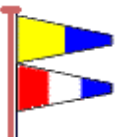


Note: The Waverider buoy and its mooring lines shall be treated as an obstruction and boats are warned to keep at least 2 boat lengths from the mark.

Record ---

53 PORT HACKING TO CLARKE IS. via SHARK ISLAND – 24NM

From the starting line, proceed to Port Jackson to Shark Island leaving the YNSW Mark and the adjacent South and West Cardinal Marks to starboard, thence to the Clarke Island finishing line, between the Clarke Island Starboard mark (lat. 33° 51.814'S: long. 151° 14.488'E) to the Flag mast on the Darling Point public jetty (bearing 206°T), distance 0.2NM, (lat. 33° 52.0S: Long. 151° 14.370'E).



Record: 3h 24m 18s Mar '14 - Warren & Kristy Buchan - "ColorTile".

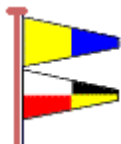
59 WINDWARD / LEEWARD COURSE

East, Southeast, Northwest or West Winds

Mark C to be laid to suit wind direction relative to Mark K, 1.5NM.

For **CSC Offshore 1 and Etchells:** Start at E to C(p), K(p), C(p), K(p), C(p), K(p), to Finish at E. (10NM)

For **CSC Inshore:** Start at E to C(p), K(p), C(p), K(p), to Finish at E. (7NM)



60 WINDWARD / LEEWARD COURSE

Northeast OR Southwest Winds

For **CSC Offshore and Etchells:**

Start at E to B(p), K(p), B(p), K(p), B (p), to Finish at E. (12NM)

Record --- 2 hrs 23 min 14 sec, "Short Shipped", March 2005

For **CSC Inshore:**

Start at E to B(p), K(p), B(p), K(p), to Finish at E. (9NM)



61 WINDWARD / LEEWARD COURSE

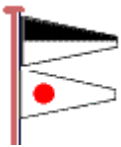
North or South Winds

For **CSC Offshore and Etchells:**

Start at E to C(p), B(p), C(p), B(p), C(p), B(p), to Finish at E. (14NM)

For **CSC Inshore:**

Start at E to C(p), B(p), C(p), B(p), to Finish at E. (10NM)

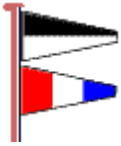


63 WAVERIDER BUOY DOUBLE - 22NM

From the starting line, proceed to the Waverider yellow spherical buoy moored approximately 1.0NM east of Cape Bailey rounding the mark to starboard, to the Port Hacking starting line pin-end mark (stbd), to the Waverider buoy (stbd), thence to Port Hacking to the finishing line.

Note: The Waverider buoy and its mooring lines shall be treated as an obstruction and boats are warned to keep at least 2 boat lengths from the mark.

Record --- 2 hrs 53 mins 07 sec 'Sea Hawk' March 2009



64 BURNING PALMS and RETURN - 23NM

From the starting line, proceed to the *Bombora Mark leaving the mark to starboard, thence to a *mark (stbd) located approximately due east of Burning Palms (lat. 34° 11.4'S, long. 151° 03.9'E) thence to Port Hacking finishing line.

*Marks may be substituted with the GPS rounding procedure.

(Section 5.11)

Note: All boats shall pass to seaward of the Jibbon Bombora (lat. 34° 04.9'S; long. 151° 10.5'E).

Record - 2 hrs 27 mins 18 secs "Color Tile" Warren and Kristy Buchan, April 2011.



69 WAVERIDER, ESTUARY, BOAT HARBOUR and RETURN - 16NM

From the starting line, proceed to the Waverider buoy (port), to Estuary starting line "E" mark (stbd), to the Boat Harbour mark (port), thence to Port Hacking to the finishing line.

Record --- 2 hrs 00 mins 15 secs "Yknot"

David Newton and Graeme Amey, January 2019.



Section 15

Wednesday Race Instructions

Category 7 Races in the Estuary

1 Objectives for these Events.

- (a) *To promote and encourage participation in sailing, and to promote Port Hacking Sailing.*
- (b) *Guests are welcomed to compete for individual race prizes.*
- (c) *PHS members only are eligible for the perpetual trophies.*
- (d) *Participants should show courtesy towards other boats and give them their due rights under the rules.*

2 Rules for the Event.

- (a) *Category 7 (AS Special Regulations Part 1 Section 2).*
- (b) *Additional Item: All boats, which do not have navigation lights permanently fitted, are additionally required to comply with AS SR 3.23.4 and 3.23.5 and carry portable navigation lights capable of being attached to the boat.*
- (c) ***Life jackets must be worn by crew on boats without life rails.***
- (d) *A permanently fitted or handheld VHF transceiver is required to be carried on vessels participating in Category 7 races.*
- (e) *Non-Spinnaker race. No sail may be set forward of a mast which are not normally carried forward of that mast when working to windward. Any sail set forward of a mast shall not be set flying.*
- (f) *A Duty Officer or their nominee will be in control of this event and will check that all boats return home.*
- (g) *The Duty Officer or their nominee may initiate a mediation hearing on rule breaches they witness on the water or protests brought to their attention after the race. All parties will be given the opportunity to give their account of the incident to the mediation hearing. A three-place penalty may be applied after mediation subject to all parties agreeing. The outcome will be announced prior to the race results after the race.*
- (h) *Boats must keep at least one boat length from moored boats or moorings.*
- (i) *A boat that may have broken a rule of RRS Part 2 while racing may take a one turn penalty at the time of the incident (Amends Rule 44.1). The penalty shall be a 360 degree turn which includes one tack and one gybe. However, if she has caused serious damage or gained a significant advantage in the race or series by her breach she shall retire.*
- (j) *Start times & shortening races are managed to allow boats to finish before sunset.*

Note: The amended rules apply as stated. Otherwise, the rules that are documented elsewhere in the "Racing Handbook" remain valid.

3 Summary for Wednesday Sailing Events

- (a) These events will be governed by the ISAF Racing Rules of Sailing as amended and the Maritime rules.
- (b) All participants must complete the ON LINE entry form and pay the entry fee when accepted.
- (c) The competition is open to Skippers who belong to a AS affiliated yacht club and have a current Australian Sailing Number (ASN).
- (d) Yachts shall run eStela tracking while racing.**
- (e) Yachts racing regularly will be encouraged to join the PHS club.
- (f) All participants must provide a valid category 7 or above audit with additions and Insurance papers.
- (g) All participants must have knowledge of the COLREGS.
- (h) All participants must understand the NSW Waterways requirements in case of accidents.
- (i) Boats shall carry navigation lights and shall illuminate them after official sunset.
- (j) Boats must avoid collisions, irrespective of individual rights.
- (k) Yachts not given their rights must signal with a red flag, in the racing area that she was involved in or saw. She shall hail 'Protest' and conspicuously display a red flag at the first reasonable opportunity to give the other boat an opportunity to exonerate their error with a 360° turn.
- (l) A protest committee may protest a boat if it learns of an incident involving her that may have resulted in injury or serious damage or blatant breaches of the rules as per Rule 60.3. This includes unprotested collisions.
- (m) The protest flag shall be Code Flag "B" or a "Red" flag.
- (n) Mediation will be available after the race. If the parties are still at 'variance' a protest meeting will be provided without prejudice.
- (o) The Race Committee may refuse the entry of any yacht in any race conducted by the club in accordance with RRS 2021-2024 rule 73.
- (p) Races will be cancelled as per the details in Section 7.

4 Race Dates and Starting Times

Sponsor TBA - 2025 and 2026

Series 1	Start 5:30pm	Oct 8 th , 15 th , 22 nd , 29 th , Nov 5 th
Series 2	Start 6:00pm	Nov 12 th , 19 th , 26 th , Dec 3 rd , 10 th , 17 th .

Christmas holiday break

Series 3	Start 6:00pm	Jan 14 th , 21 st , 28 th , Feb 4 th , 11 th , 18 th .
Series 4	Start 5:30pm	Feb 25 th , Mar 4 th , 11 th , 18 th , 25 th , Apr 1 st .

Perpetual Trophy for overall. Prize of a Jacket for each individual series (4).
Weekly race prizes of a Polo Shirt and meat tray.

Infinity Rigging- Wednesday Afternoon Overall Series – 2026

Series 1	<i>Start 3pm</i>	<i>April 8th, 15th, 22nd, 29th, May 6th, 13th.</i>
Series 2	<i>Start 3pm</i>	<i>May 20th, 27th, Jun 3rd, 10th, 17th, 24th, Jul 1st.</i>
Series 3	<i>Start 3pm</i>	<i>July 8th, 15th, 22nd, 29th, Aug 5th, 12th, 19th.</i>
Series 4	<i>Start 3pm</i>	<i>Aug 26th, Sept 2nd, 9th, 16th, 23rd, 30th.</i>

*Perpetual Trophy for Overall series
The galley and RMYC Voucher for winners of each series.
Meat tray for race winners.*

5 Starting Times (Pursuit starts)

Finishing times from the last same named series will be used for the start of a new series. All new boats will be allocated an arbitrary starting time to be reviewed for 3 races.

Each yacht's start time will be shown on the web site prior to each race. Skippers should use GPS time for their starts.

6 Finish Times and Recovery of Buoys

(a) The winning boat to record places and pass to the Duty Officer.

(b) 2nd, 3rd, 4th, and 5th boats pick-up the laid marks and anchors.

If unable to pick up mark, arrange another yacht to do so.

Boats failing their duty may forfeit their next race prize.

(c) Marks and anchors to be returned as notified via SMS from the Duty Officer. Otherwise, to designated hooks in the sailing shed.

7 Adjustment to Yacht Times

16 & above – *Times adjusted so 1st = +3, 2nd and 3rd = +2, 4th and 5th = +1. The last 9 boats get -1 minutes.*

Nine to 15 yachts - *Times adjusted by +3, +2 and +1 to 1st, 2nd and third. The last six places get -1 mins.*

Five to eight yachts - *Times adjusted by +2 and +1 to 1st and 2nd. The last three places get -1 minutes.*

Two to four yachts - *First boat gets +1 last boat gets -1.*

The aim above is to cause an average change of zero.

Yachts scored a DNC, DNS, DNF, DSQ, OCS or RET, have no change.

8 Communications

Race instructions may be SMSed around 8am on the race day.

Changes to the race may be notified via SMS before the start.

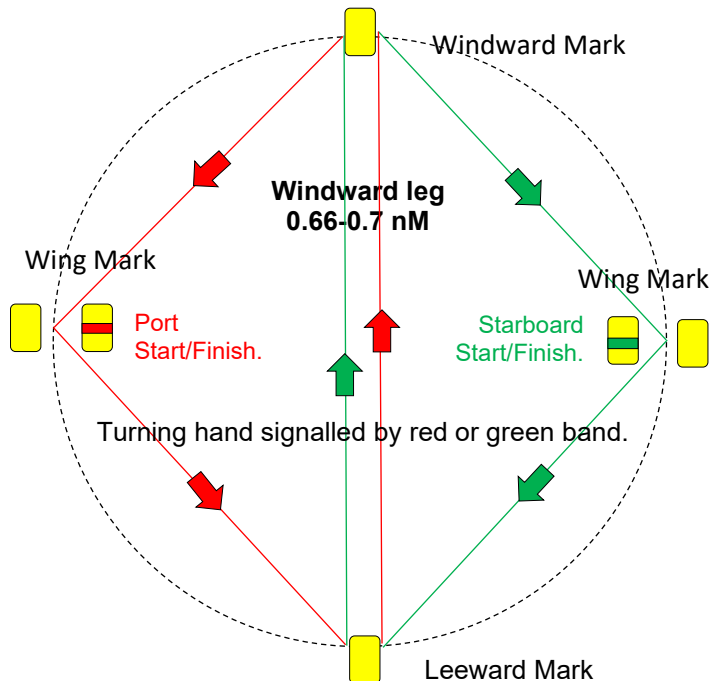
Changes necessary on the water may be signalled by sounding a horn and/or broadcasting on VHF channel 73.

9 Marks.

Yellow inflatable buoys.

10 Course

- The course will move about the Port Hacking Estuary to cater for the current wind direction.
- The windward leg will be approximately 0.66 nM.
- The wing marks will be close to a right angle to the other two marks.
- The turning direction will be signalled by a red (port hand) or green (Starboard hand) band on the starting/rounding buoy.
- The course will be three triangles.
- **At least one lap required for a result otherwise race abandoned.**



11 Starting and Finish line.

The start and finish line will be at the wing mark.

12 Shorten Course.

- a) If the leading boat has not finished within 1.5 hours of the nominated starting time or insufficient time for most yachts to complete before sunset, the finish will be signalled by the sounding of a horn when the leading boat is adjacent to the new finishing mark.
- b) A message may also be broadcast on VHF 73.
- c) In light air the finishing places for yachts **still racing** may be declared according to their positions from the finish line by the recording boat working back through the fleet notifying each yacht still racing of their finish.



IYT COURSES

for Beginners, Racing,
Coastal & International
Skipper (ICC)

TUITION

on your own yacht
and race crew
training possible

BEST WATERS

7 d/w on Botany
Bay, Port Hacking &
Sydney Harbour

Contact MARC on 04 19-229 522
marc@ausseasailingschool.com.au

Section 16

Useful Information

Daylight Saving *Within NSW, daylight saving will commence on Sunday the 5th of October 2025 and conclude on Sunday the 5th of April 2026.*

Twilight Racing *Summer Wednesday Twilight racing will commence on the 8th of October 2025 and conclude on the 1st of April 2026.*

Winter Wed. *Winter Wednesday afternoon racing will commence on the 8th of April 2026 and conclude on the 30th of September 2026*

Equipment Auditors *Members seconded as Australian Sailing (AS) Special Regulations Equipment Auditors to assist Glenn Smith: Jared Macquart, Rob Milner, Mike Wolf and Bill Dickson.*

Racing Matters *For all Queries or Information regarding Race Calculations, Lodgement of times, the Updating of the Sailings data base, or items for the PHS or Notice board - contact John Barter on 0418 253 479.*

Web Master *The Web Site is maintained and managed by John Barter.*

PHS Handbook *Editorial responsibility for this edition by the PHS Committee. All information current at the time of production.*

Location *Royal Motor Yacht Club – Port Hacking
228 – 232 Woollooware Road, Burraneer, NSW, 2230*



Section 17

Race Trophies 2025-2026

Sponsors in Red

Comprises five series of races, each with its own perpetual trophy.
Open to all yachts registered with Port Yacking Sailing.

Series 1 Summer Short Haul Series: (SH) cat 5

- (a) Spring Bate Bay 5 Races 1 Discard – Perpetual trophy
 - (b) Autumn Bate Bay 5 Races 1 Discard – Perpetual trophy
 - (c) Overall Bate Bay 10 Races 2 Discard – Perpetual trophy
- Sponsor overall: **IAN SHORT SAILS**
Sponsor Race Day: **Foreshore Painting**

Series 2 Summer Short Ocean Series: (SO) cat 4

- (a) Offshore 6 races 1 discards – Perpetual trophy
- Sponsor: **AXS-2**
Sponsor Race Day: **AXS-2**

Series 3 Summer Boat Harbour Series: (HBR) cat 5

- (a) Bate Bay 5 Races 1 discard – Perpetual trophy
- Sponsor: **Cover Girl**
Sponsor Race Day: **Foreshore Painting**

Series 4 Summer Two Handed Series: (TWH) cat4

- (a) Offshore 4 races 1 discard – Perpetual trophy
- Sponsor:

Series 5 Winter Passage Series: (WTR) cat 5

- (a) Bate Bay 6 races, 1 discard – Perpetual trophy.
- Sponsor Overall: **AusSea Sailing School**
Race Day: **AusSea Sailing School**

Club Champion The winning boat will score 3 for 1st, 2 for 2nd and 1 for 3rd place in all the summer Saturday and Sunday races for Short Haul, Short Ocean, and Boat Harbour series.
Ties will be broken by the most 1st places, then the most 2nd and then the most 3rd places.
Sailing Champion - Perpetual Trophy

Most Improved Yacht that records the highest percentage increase in performance measured by the PPH handicapping system.
Most Improved Award - Perpetual Trophy

Founders Trophy PHOYC Winner of the re-enactment races on corrected time for;
(a) Short Haul Division "Bell Buoy" race
(b) Boat Harbour Division "Kingsway" race
Perpetual Trophy **Fred Teiffel (Founder)**

Combined Ocean series Combined PHS and CSC race series
(a) Short Ocean Division
(b) Boat Harbour Division **PHS trophy**

Mid-Week: Summer AEDT **Wednesday Twilight:** 24 Races overall
2 series pre-Christmas
2 series post-Christmas
Open to all skippers registered with AS and an affiliated club.
Non-spinnaker
3 discards overall
0 discard in each series
0 discard in each series
Twilight Perpetual Overall
Sponsor: **Macquart Marine**

Mid-Week: Winter AEST **Wednesday Afternoon:** 26 Races overall
6 Monthly series
Open to all skippers registered with AS.
Non-spinnaker
4 discards overall - Trophy
0 discards for each series
Afternoon Perpetual Overall
Sponsor: **Overall - Infinity Rigging Series – the galley/RMYC**

Consistent Yacht **Over five series;** SH, WTR, TWI, AFT and SO/HBR series
2 series discards allowed.
Perpetual Trophy
Score for each series = (raced) / (total races sailed) x 100
Total yachts score = sum of highest three series.
Ties: Multiple winners allowed.
Last year's winner excluded from current year.
Donated: **Ted Newbery (1st Captain)**

Section 18

Trophy Winners 2024 - 2025

Perpetual Trophies (*Trophy name*) (*Sponsor*)

Series 1: Summer Short Haul

(a)-Spring Series 2023	1 st -Excelsior	Pete Baxter/Roy Toal
IAN SHORT SAILS	2 nd -Excentric	Michael Wolf
Spring Point Score	3 rd -MC Starship	Brent Vaughan
(b)-Autumn Series 2024	1 st -L'attitude	John Barter
IAN SHORT SAILS	2 nd -Tobruk	Nick Wilson/Brett Parr
Autumn Point Score	3 rd -Excelsior	Pete Baxter/Roy Toal
(c)-Summer Series	1 st -Excentric	Michael Wolf
IAN SHORT SAILS	2 nd -L'attitude	John Barter
Summer Point Score	3 rd -Excelsior	Pete Baxter/Roy Toal

Series 2: SO PPH

RMYC Dining	1 st -Excentric	Michael Wolf
Short Ocean Trophy	2 nd -marri nuwi	Alistair Rowe
	3 rd -Yknot	David Newton/Graeme Amey

Series 3: Boat Harbour

Cover Girl	1 st -Excelsior	Pete Baxter/Roy Toal
Harbour Series	2 nd -MC Starship	Brent Vaughan
Trophy	3 rd -Tobruk	Nick Wilson/Brett Parr

Series 4: Two Handed PHS - Sailed with CSC

	1 st -Marri nuwi	Alistair Rowe
	2 nd -	
	3 rd -	

Series 5: Sunday Winter Passage 2023

Newton Real Estate	1 st -Jazz Bar	Jared Macquart/Tony Landers
Newton Perpetual	2 nd -Majella	David Cartmer
	3 rd -Tobruk	Nick Wilson/Brett Parr

PHS Club Champion**Club Championship**

First - Excentric
 Runner up - Excelsior

Michael Wolf
 Pete Baxter/Roy Toal

Most Improved Performance.

107.6% Excentric

Michael Wolf

Encouragement Award**Founders Perpetual Trophy****Founder - Fred Teffel** 1st - Excentric Michael Wolf (Bell Buoy)**Founders Trophy** 1st - Excelsior Pete Baxter/Roy Toal (Bate Bay)**Combined Ocean series** Combined PHS and CSC race series**Combined** Short Haul race**Ocean****trophy** Boat Harbour race**Wednesday Twilight Series****Newton Real Estate** 1st - If it fits Ian Ford**Twilight Race Point** 2nd - MC Starship Brent Vaughan3rd - L'attitude John Barter**Wednesday Afternoon Series 2023****Infinity Rigging** 1st - Crest Haydn Skelton**Jellybeans Trophy** 2nd - If it fits Ian Ford3rd - MC Starship Brent Vaughan**Most Consistent Yacht(s)****First Sailing Captain** 1st - Tobruk Nick Wilson/Brett Parr**Ted Newbery Trophy** 2nd - Excelsior Pete Baxter/Roy Toal3rd - MC Starship Brent Vaughan**Most Improved Crew****RMYC-Port Hacking** TBA**Only While Sailing.****RMYC-Port Hacking** TBA

Section 19
Sailing Members.
RMYC - Port Hacking Sailing



Last name	First	RMYC	Partner	ASN	Sails on Yacht
AMEY	Graeme	7396	Dianne	911337	Yknout
ATHERTON	Steve	14289	Jean	913604	Frisky Too
BARTER	John	5293	Margaret	13159	L'attitude
BARTOLO	William	11839	Ben (NOK)	825352	marri nuwi
BATES	Terry	9711	*	693652	Pied Piper
BAXTER	Pete	19584	Karen	1223790	Excelsior
BONORCHIS	Daniel	19665	Marie Noel	1215027	pied piper
BOURNE	Raymond	14288	*	913603	Frisky Too
BOWER	John	4053	Judy	60946	Inception
BRIGGS	Tanya	+	Anthony	1266886	L'attitude
BROWN	Daniel	21101	+	1283087	+
BURGESS	Glen	14731	*	1007904	Pied Piper
BURGESS	Kieran	+	Ashley	1262721	Pied Piper
BURKE	Frank	7346	*	586629	Inception
CARTMER	David	9793	Mary	1009181	Majella
Cartmer	Dominic	13814	+	1012992	Majella
Cartmer	Edi		+	1082401	Mach 1
CARTMER	Mary	11653	David	1004715	Majella
Chapple	Donald		Christine	52910	Tobruk
CHILTON	Andrew	6220	Marquerite	524541	Inception
CHILTON	Steve	16304	*	1097345	Inception
CHYNOWETH	Mark	15701	+	1054835	+
Corbett	Peter	14120	Deborah	574409	Tobruk
COUVARAS	Peter	17747	+	561447	Brand X
CROFT	Stephen	15293	+	1040926	Aeolus
CROWHURST	Jim	6649	Adele	1040326	Inception
DANKERS	Andrew	+	Lisa	1225782	Achtung Baby
DAVIES	Warren	19920	+	1239554	Inception
DENFORD	Hayden	17185	Wendy	1123206	Majella
DENNETT	Damian	14990	+	1031199	Pied Piper
DICKER	Graham	19358	+	1262031	L'attitude
DICKSON	Lynden	18740	Bill	1283088	Reve
DICKSON	William	12096	Lynden	911303	Reve
DODDS	Tim	13751	Julie	910740	L'attitude
DODIC	Frank	19937	+	1283089	+
Druce	Jacob		Nick Wilson	1289994	Tobruk

Last name	First	RMYC	Partner	ASN	Sails on Yacht
DURRINGTON	Kim	7285	Jan	585228	Mumambo Jumbo
DYKES	Stephen	8179	Karin	685555	Margaritaville
EELES	Laurie	6335	Trudy	44082	Rhumb Line
EVANS	Jonathan	17330	Kerry	1133494	Excentric
FIELDER	Gary	5834	Tracey	911317	Yknot
FOGARTY	Glenn	15909	Lynda	1064591	Cordelia
FOOTE	Nigel	+	Pete Baxter	1257272	Excelsior
FORD	Ian	14939	Jan	617368	if it fits
French	Geoff		Deb French	1286935	Navigator
FULLER	Wayne	20661	+	1271796	+
GAMBLE	Mark	5738	Yolande	1073316	Aeolus
GAWNE	William	5692	Brenda	572440	Free Spirit
GREEN	Garry	8771	*	679458	Chinook/Aeolus
GREEN	Robert	16862	+	1271797	+
GRIFFIN	Michael	7670	+	1283090	+
GROTE	Daniel	+	+	1259704	+
HAMMOND	Paul	17948	+	1165876	L'attitude
HARRAHAN	Bernard	+	+	1221610	+
HARRIS	Shane	17863	Kim	1234072	Yknot
HEATH	Jacob	19518	Lucia	1187429	White Noise
HODSON	Paul	17220	Lynda Hodson	1124901	Yknot
HOLLOWAY	Greg	16267	+	1283091	+
HOWARD					
BELL	Jonothon	19477	+	1221609	marri nuwi
HUME	John	7800	*	658611	Big Foot
Hurst	Anthony		Pete Corbett	1289432	Navigator
Hurst	Kyle	9702	*Jo Hurst	523131	Mangrove Jack
INNES	David	19367	Richard Stock	1213262	Etre Jeune
JACKSON	Bruce	+	Margaret	1275447	
Jackson	Garth		Amanda Jackson	1281182	Tobruk
JOBE	Philip	9895	Wendy	564098	Brand X
JOHNSTON	Dave	3925	Dianne	24136	Axiom
JUDE	Lisa	18546	Andrew Dankers	1190712	Achtung Baby
KEYS	Lucas	16529	+	1283092	+
KILPATRICK	Ross	11508	Chris	819049	Yknot
Kirlew	Peter		Nil	1286000	Sea Glass
KLEES	David	19518	+	851733	White Noise
KLEES	Mark	7790	Tina	722941	White Noise
Knight	Gordon	14934	Carole	852509	Yknot
LANDERS	Tony	14557	*	871995	Jazz Bar
LeCORNU	David	6046	+	1239553	Chinook
LEE	Kenneth	15533	Janet	1221147	Axiom

Last name	First	RMYC	Partner	ASN	Sails on Yacht
LEE BROWN	Craig		Sharmon	1286814	Mach1
LEVI	Rex	9701	+	1265794	Tobruk
LEWIS	Raymond	5089	Brenda	49059	Aeolus.
LEWIS	Robert	+	Sue	1262448	L'attitude
Lisser	Andrew	16755	*	1107890	marri nuwi
LLOYD	Joshua	+	Rebecca	1269921	White Noise
LUKER	Graham		+	660346	+
LUPTON	Jim	5090	Virginia	24140	Rhumb Line
LUPTON	Virginia	6380	Jim	528767	Rhumb Line
MACKAY	David	3406	Fiona	29431	Stock Car
MACQUART	Jared	9224	*	584950	Jazz Bar
MARKWELL	Lloyd	15255	+	1039078	Yknot
McMANUS	Steve	4447	Connie	24141	*
MEHAN	michael	17345	+	594030	MC Starship
MILNER	Robert	6146	Amanda	60950	Sarsala
MILROSS	Chris	7697	+	1031207	Majella
MINTER	Paul	4030	Kay	351592	Crews Control
MITCHELL	Bruce	13913	Barbara	1121310	Possible Dream
MONCRIEFF	Gordon	18072	Shirley	1150449	marri nuwi
MORGAN	Catherine		James Morgan	1280342	marri nuwi
MORGAN	Chris	14375	Marion	809521	Etre Jeune
MORGAN	James	14590	*	1004717	Excentric
MULLARD	Lindsay	19520	+	1259593	Excelsior
NEWTON	David	9812	Karyn	715929	Yknot
NIEUWLAND	John	+	Christine	1269876	Majella
O'CONNOR	Chris	19673	Dianne	523623	Etre Jeune
OLEARY	Fin			1289478	Tobruk
OLOVICH	John	9079	+	523617	Excentric
PACKHAM	Colin	17084	+	1129492	+
PARKER	Don	3563	Elizabeth	24147	Axiom
PARKES	Alison	6020	Alistair Rowe	1135307	marri nuwi
PARR	Brett	9670	Carolyn	561450	Tobruk
PAULL	John	8721	*	640637	Excentric
PESCU	Mark	3601	Julie	501809	Midnight Magic
PHILLIPS	William	17706	+	572253	+
PINN	Paul	14212	*	913131	Endless Summer
PITT	Nathan	+	Jess	1279236	White Noise
POWER	Dallas		Emilie	1279485	Margarita
PYPER	Kris	14547	Dave	1233322	White noise
ROCHAIX	Peter	6046	Leslie	592966	Chinook
Rose	Stephen	+	Yes	1255144	Mach1, Majella
ROWE	Alistair	5934	Allison	601496	marri nuwi

Last name	First	RMYC	Partner	ASN	Sails on Yacht
SAUNDERS	Diana	14947	*	1097350	marri nuwi
SAUNDERS	Steven	11406	Dianne	70991	marri nuwi
SCOTT	Gary	15759	+	1056955	Aeolus
SIMPSON	Jim	12302	+	1265795	+
SKELTON	Haydn	+	Clair	1145963	Crest
SKELTON	Ralph	7297	Leslie	17009	Crest
SMIT	Paul	7100	Kim	523631	Frisky Too
SMITH	Glenn	9124	Leeanne	582842	Excentric
SORENSEN	Mark	16519	*	1097293	Windsong
SPENCER	Greg	7212	Gillian	1222121	Kite Runner
STEWART	Bronson		Peter Corbett	793716	
Stock	Damon		Nil	1286799	Etre Jeune
STOCK	Richard	13930	Roslyn	1121889	Etre Jeune
TABONE	Rhys			1269907	
TARGETT	James	10977	*	911823	Chinook
TAYLOR	Warwick	11793	*	911820	Airstream
TEIFFEL	Kenneth	5565	Libby	51805	Possible Dream
THORNHIL- WEEDON	Nigel	+	Jennifer	1279428	Tobruk
THROSBY	David	15291	Catherine	1021304	Yknot
TOAL	Royden	19582	Tanya	1092279	Excelsior
TORRISI	Peter	+	Helen	1259526	+
TOWNDROW	Anthony	4933	Christine	40364	Pied Piper
TRIBE	Michael	20623	+	1259595	+
TYRRELL	Rod	9599	Anne	678859	Chinook
VAUGHAN	Brent	17381	+	871979	MC Starship
WALKER	Robert	+	Cathryn Walker	508254	Excentric
WAUGH	Barry	3665	Diana	24155	Waughship
WEIDEMIER	John	4779	Rosemary	24156	Sirocco
WELLS	Brad	19508	Karen	817055	MC Starship
WILKINS	Chris	7365	N/A	41375	Rhumb Line
WILKINSON	Ralph	14391	*	916219	Endless Summer
Wilson	Jeanette	16862	Nick Wilson	1100763	Tobruk
WILSON	Nick	12116	Jeanette	841472	Tobruk
WILSON	Richard	20623	+	1259596	Yknot
WITTEY	Neville	8084	Janie	10112	L'amour di la vie
WOLF	Bede	16572	Natalie	1107891	Excentric
WOLF	Michael	6149	Susanna	501836	Excentric
WOLF	Richard	16753	Alison Wolf	1102679	Excentric
Zagame	John	14614	Joanne	870637	Koh Rache

Note: List shows members from the 2024-2025 season

Section 20
Yacht Register
Sailing Yacht Members



Yacht	Sail #	Skipper	Model Length
Achtung Baby	40	Lisa Jude Andrew Dankers	Bavaria 40
Aeolus	38	Steve Croft	Bavaria 38
Amazing Grace		Bruce Munro	Beneteau
Axiom	409	Don Parker	Jeaneau 409
Chilli Heat		Scott Munro	Oceanis 473
Chinook	M177	Peter Rochaix	Duncanson 37
Cordelia		Glenn Fogarty	Seawind 850
Crest	22	Haydn Skelton	5.5 Metre
Etre Jeune	G445	Richard Stock	Hanse 445
Excentric	5384	Mike Wolf	Northshore NSX 38
Excelsior	496	Pete Baxter Toy Toal	East Coast 31
Free Spirit	345	Bill Gawne	Hanse 345
Frisky Too	12	Paul Smit	Trailer Tri
Hirondelle		Jan Gardberg	Swan
Jazz Bar	36	Jared Macquart Tony Landers	Adams 10
If it Fits	5236	Ian Ford	Northshore 38 NSX
Inception	6940	Andy Chilton	Bavaria 40
L'amour di la vie		Neville Wittley	Beneteau 50
L'attitude	717	John Barter	Dehler 41DS
Mach 1	777	David Cartmer	Match 38
Margaritaville	10102	Steve Dykes	Seawind 1000
Marri nuwi	2936	Alistair Rowe	Elan E4
M C Starship	186	Brent Vaughan	Corsair
Mumbo Jumbo	8303	Kim Durrington	Mumm 36
Navigator	3	Peter Corbett	Ultimate 3000
Patrol Boat	110	Tony Towndrow Glen Burgess Damien Dennet Daniel Bronorchis	Cavalier 28

Yacht	Sail #	Skipper	Model Length
Possible Dream	7171	Ken Teiffel	C and C 36
Rhumb Line	6378	Jim Lupton	Adams 13
Regatta	180	Michael Meehan	Corsair
Réve	709	Bill Dickson	Jeaneau 39i
Sarsala	160	Robert Milner	Dubois 34
Sirocco	6500	John Weidemier	Peterson 30
Stamped Urgent	69	David Mackay	J 24
Synchronicity Too		Warwick Taylor	X-Yacht 40
The Waugh Ship	6473	Barry Waugh	Beneteau 50
Tobruk	7767	Nick Wilson Brett Parr	Beneteau 38
Windsong	850	Mark Sorenson Lou Pagano Brad Butler	Seawind 850
White Noise	3535	Mark and David Klees Tina Costanzo	First 35
Yknot	7076	David Newton Graeme Amey	Dehler 46



Bryce Edwards

Mobile: 0415 231 791

Email; info@infinityrigging.com.au

Web: www.infinityrigging.com

- *All standing and running rigging.*
- *Cordage and splicing.*
- *Furling systems and installations.*
- *Mast tuning and refurbishment.*
- *Masts, booms, and spinnaker poles.*
- *Lazy Jack and sail handling systems.*
- *Winch servicing.*

Hardware supply and installation.

Section 21

Port Hacking Cruising



1 Cruising Division

The Cruising Division shall comprise those boats participating in organised cruising events.

2 Disclaimer of Liability

All those taking part in an organised cruise do so entirely at their own risk. The club will not accept any liability for material damage or personal injury, or death sustained in connection with or prior to, during, or after a cruising event conducted by the club.
Organised cruises do not rank as races.

3 Direction

Cruising events shall be conducted under the direction of the Cruising Master or his nominee who will be responsible for event schedules and liaison with other clubs.

4 Program

Advice of coming events will be published on the Cruising page in the sailing Web Site.

Completed events and other useful information can be found on the Cruising web site; [Coming Social and Cruising Events – Sailing \(sailing-rmycph.org.au\)](http://sailing-rmycph.org.au)

5 Proposed Events

Date	Location	Description
6-Sept-2025	Season Opening RMYC	Presentation and snacks
6-Oct-2025	Wildflowers Picnic Low tide 0.2m 14:14	TBA
5-Dec-2025	Audley tide 1.9 9am	BBQ and overnight
	Wattamolla	
26-Jan-2026	Australia Day Yarra Bay/La Perouse	
8-Jun-2026		Kings Birthday weekend

Specific dates to be advised closer to the events.

6 Safety

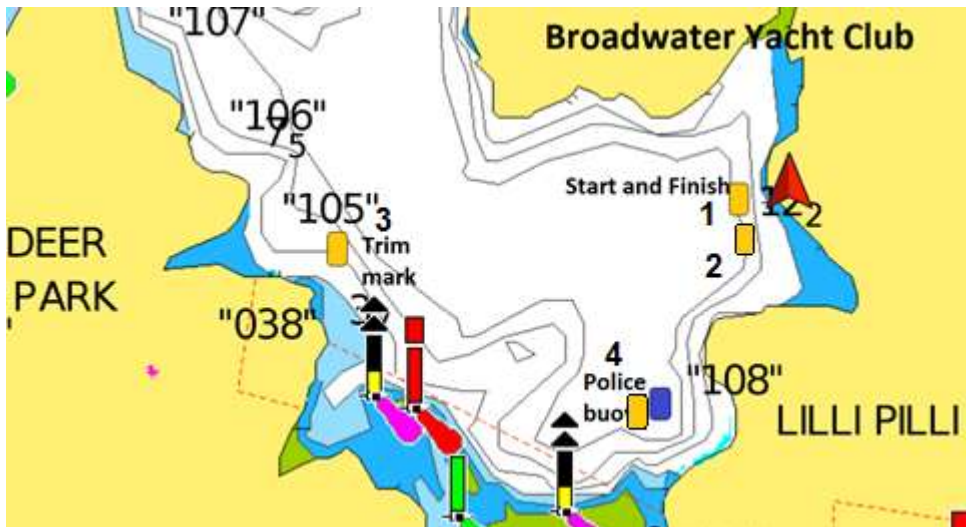
Each boat participating in a club cruising event shall carry the appropriate safety requirements of the Roads and Maritime Authority.

7 Broadwater Classic Course

- (a) The start time is 12 noon in the summer (Daylight Saving) and 11:00am in Winter (EST).
- (b) The course consists of two triangles and a sausage.
- (c) The start/finish line is off the point between Great Turriell bay and Gannons Bay. Marked by two yellow marks.
- (d) A third yellow mark will be laid to the west in the vicinity of Farnell Bight.
- (e) The fourth yellow mark is 30 metres west of the blue police mooring near the baths off Lilli Pilli point.
- (f) From the start sail west to the third mark (p)" at Farnell Bight, then to the police mooring mark (p)" at Lilli Pilli baths then to the start mark.
- (g) Then complete a second triangle.
- (h) The last leg is from the start mark to the third yellow mark (p)" then directly to finish between start/finish marks, crossing from west to east.
- (i) The Port Hacking Open Sailing Club (Yowie Bay) has a Sunday race that starts at 1:30pm and involves small dinghies. If you encounter any of these boats, be courteous and stay well clear.

Address for land yachts: 28 Turriell Bay Road, Lilli Pilli

Mobile: 0418 253 479 or Home: 9501 3641



8 Contact Details

email address; info@sailing-rmycph.org.au

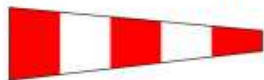
Cruising Mobile contact; Bill Dickson 0428 927 071

Section 22

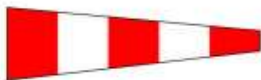
Race Signals

The meanings of visual and sound signals are stated below. An arrow pointing up or down (↑ ↓) means that a visual signal is displayed or removed. A dot (•) means a sound; five short dashes (-----) mean repetitive sounds; a long dash (—) means a long sound. When a visual signal is displayed over a class flag, the signal applies only to that class.

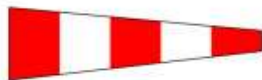
Postponement Signals



↑ ••• ↓ •
AP Races not started are *postponed*. The warning signal will be made 1 minute after removal unless at that time the race is *postponed* again or *abandoned*.



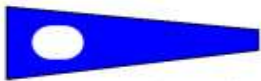
↑ ••
AP over H Races not started are *postponed*. Further signals ashore.



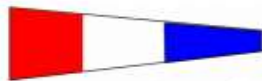
↑ ••
AP over A Races not started are *postponed*. No more racing today.



Pennant 1 ↑ •• ↓ •



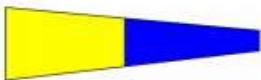
Pennant 2 ↑ •• ↓ •



Pennant 3 ↑ •• ↓ •



Pennant 4 ↑ •• ↓ •



Pennant 5 ↑ •• ↓ •



Pennant 6 ↑ •• ↓ •

AP over a numeral pennant 1–6 *Postponement of 1–6 hours from the scheduled starting time.*

Abandonment Signals



↑ ••• ↓ •
N All races that have started are *abandoned*. Return to the starting area. The warning signal will be made 1 minute after removal unless at that time the race is *abandoned* again or *postponed*.

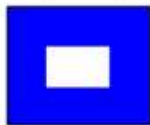


↑ •••
N over H All races are *abandoned*. Further signals ashore.



↑ •••
N over A All races are *abandoned*. No more racing today.

Preparatory Signals



↑ ● ↓ —

P Preparatory signal.



↑ ● ↓ —

I Rule 30.1 is in effect.



↑ ● ↓ —

Z Rule 30.2 is in effect.



↑ ● ↓ —

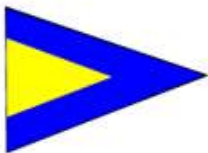
Black flag.
Rule 30.3 is in effect.

Recall Signals



↑ ●

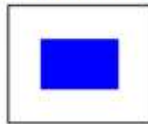
X Individual recall.



↑ ● ● ↓ ●

First Substitute General recall.
The warning signal will be made 1 minute after removal.

Shortened Course



↑ ● ●

S The course has been shortened. Rule 32.2 is in effect.

Changing the Next Leg



C The position of the next *mark* has been changed:



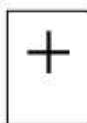
to starboard;



to port;



to decrease the length of the leg;



to increase the length of the leg.

Other Signals



↑ ●

L Ashore: A notice to competitors has been posted.
Afloat: Come within hail or follow this boat.



M The object displaying this signal replaces a missing *mark*.



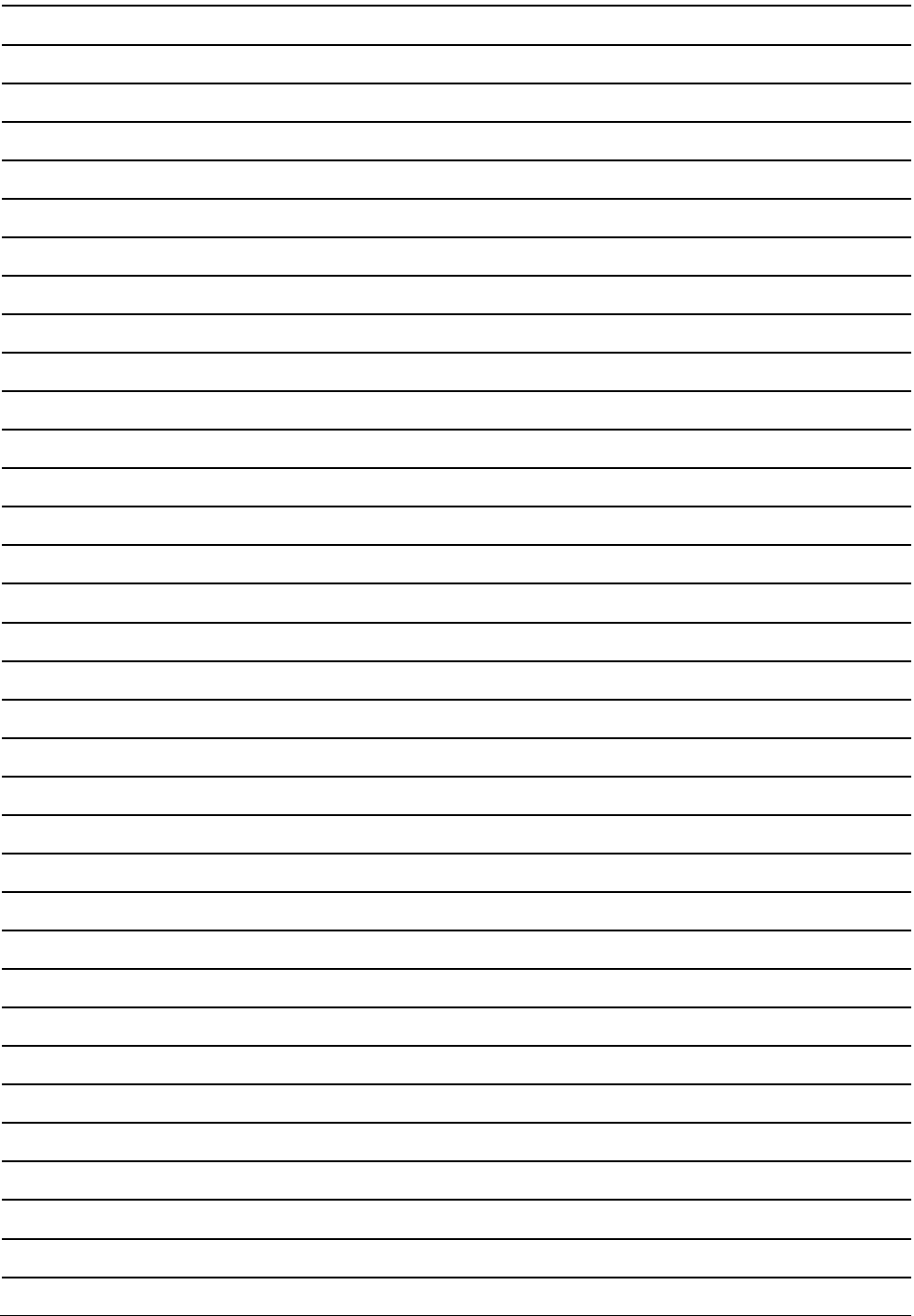
↑ ●

Y Wear a personal flotation device.



(no sound)

Blue flag or shape. This race committee boat is in position at the finishing line.



MACQUART



MARINE

Boat Management & Maintenance Solutions

Web: www.macquartmarine.com

Ph: Jared – 0479 152 235

Our Services

- *Complete boat and yacht management*
- *Antifouling*
- *Maintenance Plans*
- *Boat Deliveries*
- *Covers and Upholstery*
- *Teak rejuvenation*
- *Running rigging*
- *Marina Pen Dock lines*
- *Boat Detailing*
- *Management and coordination of all other trades*



Section 24

Emergency Communications

Extracted from the Yacht Incident Management Plan

Radio Channels

VHF Channel 16	<i>Distress and calling channel</i>
VHF Channel 67	<i>Distress, Urgency and Safety calling and weather</i>
VHF Channel 73	<i>For RMYCPH inter-fleet communications</i>
VHF Working Channel	<i>As determined and advised by Marine Rescue</i>

Ambulance, Fire, Police & Westpac Life Saver Rescue Helicopter. 000

Typical questions may include:	<i>What was the address of the emergency?</i>	<i>or</i>
	<i>What was the contact phone number?</i>	<i>call RMYC at</i>
	<i>Is the patient Male or female?</i>	<i>9523 9300 to</i>
	<i>The approximate age of the patient?</i>	<i>co-ordinate</i>
	<i>Is the patient conscious?</i>	<i>the rescue.</i>
	<i>Is the patient breathing?</i>	
	<i>Please explain exactly what happened?</i>	

Other Emergencies

Water Police - Sydney	9320 7499
Water Police - Botany Bay	9529 8140
Water Police - Broken Bay	9910 7899

Marine Rescue Stations

Sydney	9450 2468
Solander (for Port Hacking/Botany Bay)	9668 9888
Broken Bay	9999 3554
Cottage Point	9456 3055
Middle Harbour	9969 3270
South Head	9337 5033
Port Kembla	4274 4455
Hawkesbury	9985 9012

General

Royal Motor Yacht Club - Port Hacking	9523 9300
General Manager RMYC-PH	9523 9300
RMYC-PH Tender	0466 083 201
Cronulla Sailing Club	9523 6114
Weather	13 1236

Port Hacking Emergency Evacuation Recovery Point

The Royal Motor Yacht Club Port Hacking marina's western end of the southern finger is a designated emergency evacuation point for Port Hacking.